



*“Ready-Cut”*  
HOMES  
BY

GEORGE HUDSON PTY LTD  
TIMBER MERCHANTS  
BRIDGE ROAD GLEBE SYDNEY  
CITY OFFICE 7 CASTLEREAGH STREET



*A Selection of  
Modern Bungalow  
Designs*

by



**GEORGE HUDSON PTY. LTD.**

**Timber Merchants**

**GLEBE—SYDNEY—N.S.W.**

HUDSON'S "Ready-Cut" HOMES ..

In preparing the plans shown in this catalogue, we have drawn on our vast experience—which extends over eighty-nine years—with this class of home, and submit these designs as combining the utmost in value, comfort and convenience, with the absolute minimum in cost. We have also given close consideration to the external appearance, and are sure these Homes will appeal to you.

We recognise, however, that you may have your own ideas with regard to the lay-out of the rooms, etc., in your new home, and we will, of course, make any amendments you may desire and will quote accordingly.

**Should you prefer a design of your own, we shall be very pleased to quote for the materials "READY-CUT," and suggest that you send us a sketch, no matter how rough, so long as it conveys to us your requirements.**

We welcome suggestions and are only too pleased to co-operate with you with regard to any idea you may desire to embody in your home.

Although the materials are standardised each home has its own individuality and will compare more than favorably with buildings costing considerably more.

If you desire to inspect any of our "Ready-Cut" Bungalows, we can refer you to hundreds of satisfied clients, who have already erected our homes.

**Erection:**—While we do not erect our bungalows, we can recommend a number of first-class contractors, who are highly specialised in the erection of these buildings, and are in a position to quote you a very low price for all brickwork, erection, pointing and for the completion of the building ready for occupation.

**Garages:**—Hudson's "Ready-Cut" Garages represent the best value obtainable. We publish a separate folder illustrating the different types which, for design, economy and all-round good value, are unexcelled. Write for full particulars.

**Terms:**—Ask for particulars of our easy payment system. We do not charge any legal expenses.

•GEORGE HUDSON PTY LIMITED•GLEBE SYDNEY•

George Hudson Pty. Ltd. are the pioneers of the "Ready-Cut" system in Australia, and are the **only firm preparing materials which are really "Ready-Cut"** in the true sense of the word. We have been handling cottage materials for the past 89 years and have installed the most up-to-date machinery obtainable, specially adapted for this class of work.

Hudson's "Ready-Cut Homes are **NOT PORTABLE**—they are prepared for erection as **PERMANENT BUILDINGS**. They are superior to structures cut by hand, as each particular operation, being done by the one machine, ensures a perfect fit.

#### ADVANTAGES OF HUDSON'S READY-CUT HOMES:

1. **You do not pay** for waste, which is unavoidable when materials are prepared on the job.
2. **You do not pay** freight or cartage on waste material.
3. **You do not pay** for errors in over or under estimating quantity of material required, as our great experience in this class of work enables us to calculate to a nicety just how much is required.
4. They can be erected in less than half the time required in the ordinary way.
5. **You do not** require to be an expert tradesman, as all the technical part of the work is done for you.

With the idea of assisting those who are anxious to build their own homes, we are now preparing materials in a way that has never before been attempted in Australia. The following is an outline of some of the work carried out when preparing materials under our "Ready-Cut" System:—

We cut and prepare the whole of the framework. The sleeper plates are halved together; floor joists cut to the exact length; wall plates halved together and housed; studs cut and housed; all rafters, hips, valleys, etc., are cut ready for placing in position. We clearly mark timbers and we guarantee everything to fit.

We fit all doors and sashes into frames with hinges, locks and fasteners in position—so that it is only necessary to place the frame complete into the stud opening prepared for the purpose.

We prepare barge boards, and cover boards ready for fixing in position.

Architraves, band mouldings, etc., are cut in sets ready for fastening.

Doors, sills are cut ready to drop in position.

All verandah posts, verandah plates, verandah rafters, etc., are cut ready for fixing.

We do not cut weatherboards, house flooring or lining boards, but ample material is allowed for waste, as we think it better to cut these on the job. The verandah flooring, however, is cut to exact length.

The fitting of doors and windows and all extra work over and above the cutting of the framework represents a distinct service, **which only WE give with all our "Ready-Cut" materials, and**, in addition, you have the assurance of a first class job—even before the building is commenced.

(CONTINUED OVER PAGE)

The whole of the materials supplied throughout are first-class in every respect, and nothing else but seasoned timbers suitable for the purpose are used in all cases.

Another very important service we render, and which is of exceptional interest to anyone building his own home, is to provide a very complete set of plans and specifications, etc., which will enable him to make a thoroughly workmanlike job. The following are some of the details supplied:—

**Foundation Plan:** This drawing shows the position of all piers, foundation walls, chimneys, etc., and gives all necessary setting out measurements. The position of every pier, etc., is shown—also every sleeper plate and floor joist is shown in the correct position, and is lettered or numbered clearly.

**Ground Plan and Elevation:** This plan shows the lay-out of the rooms and the marking of all the plates is indicated thereon. In addition, where the building is lined with Fibrous Plaster, Asbestos Cement or other material the position of every sheet is marked.

**Ceiling Plan:** This drawing indicates the position of all ceiling joists and ceiling binders, and where necessary shows the position of each sheet of Asbestos Cement or Plaster.

**Roof Plan:** On this plan is shown every rafter, ridge, hip, valley, purlin, etc., and makes the erection of the roof absolutely fool-proof.

**Plan of Roof Iron:** We supply the correct length of iron to ensure a uniform lap and the plan provided will show where the various lengths are intended to be used.

**Details:** We provide a general sheet of details, showing sections through floor, wall, etc., also indicating method of fixing architraves, skirtings, etc.

In addition to the above we supply any other details which may be necessary to suit the particular type of building you propose to erect. We also provide complete plans and specifications to enable you to obtain the necessary approval from the Municipal Council.

You can readily understand that with the assistance of these plans and details the work of erection of a Hudson's "Ready-Cut" Bungalow is very simple, and an absolutely first-class job can be made by anyone with only a slight knowledge of carpenters' work.

Also included in the service we render is the assistance of our Inspector, who is a practical man, and he is at all times very pleased to advise with regard to the erection, and will keep in touch with you from the start to the finish of the job.

**Hudson's Portable Rooms, Garages, etc.**—To meet the great demand for Rooms and Garages that are **Portable in the real sense of the Word**, we specialize in preparing these buildings **Framed up in Sections** ready for bolting together. The walls and floor are each in one section, so that they can be taken down and re-erected any number of times without damage.

The cost and time of erection is reduced to a minimum.

We do not include Bricks, Lime, Cement or Paints—nor fittings such as Stove, Copper, Bath, etc.

HUDSON'S *"Ready Cut"* HOMES ..



DESIGN  
No 202

CITY OFFICE • 7 CASTLEREAGH STREET •

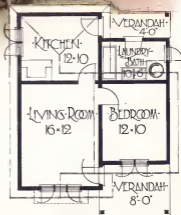
HUDSON'S "Ready Cut" HOMES ..



• DESIGN •  
• NO 210

• GEORGE HUDSON PTY LIMITED • GLEBE SYDNEY •





• DESIGN •  
• Nº 302

• CITY OFFICE • 7 CASTLEREAGH STREET •

HUDSON'S "Ready Cut" HOMES ..

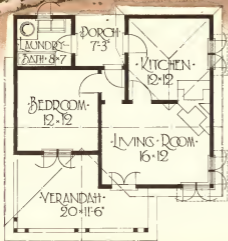


· DESIGN ·  
· NO 303 ·



· GEORGE HUDSON PTY LIMITED · GLEBE SYDNEY ·

HUDSON'S "Ready Cut" HOMES ..



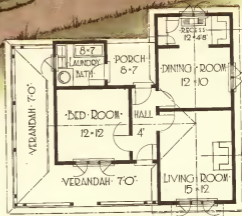
DESIGN  
No 305

• CITY OFFICE • 7 CASTLEREAGH STREET •

HUDSON'S "Ready Cut" HOMES ..



• DESIGN •  
• NO 306



• GEORGE HUDSON PTY LIMITED • GLEBE SYDNEY •

HUDSON'S "Ready Cut" HOMES ..

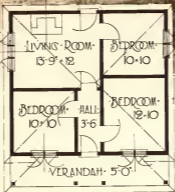


• DESIGN •  
• NO 317



• CITY OFFICE • 7 CASTLEREAGH STREET •

HUDSON'S "Ready Cut" HOMES ..

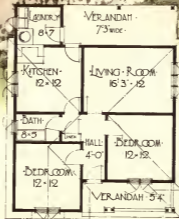


DESIGN  
No 408

• GEORGE HUDSON PTY LIMITED • GLEBE SYDNEY •

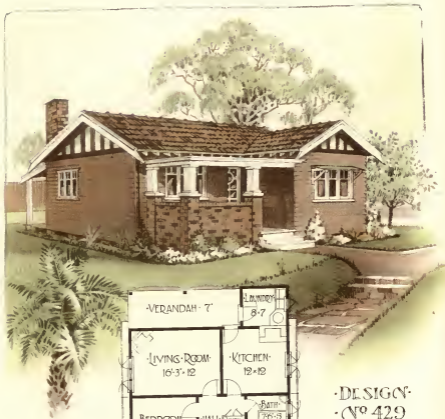


• DESIGN •  
• NO 428



• CITY OFFICE • 7 CASTLEREAGH STREET •

HUDSON'S "Ready Cut" HOMES ..



DESIGN  
No 429

GEORGE HUDSON PTY LIMITED GLEBE SYDNEY



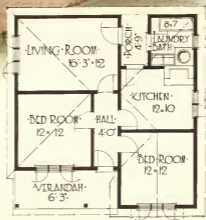
HUDSON'S

"Ready Cut"

HOMES ..



DESIGN  
No 430



CITY OFFICE • 7 CASTLEREAGH STREET •

HUDSON'S "Ready Cut" HOMES ..

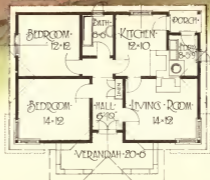


• DESIGN •  
• N<sup>o</sup> 431

• GEORGE HUDSON PTY LIMITED • GLEBE SYDNEY •



DESIGN  
No 432

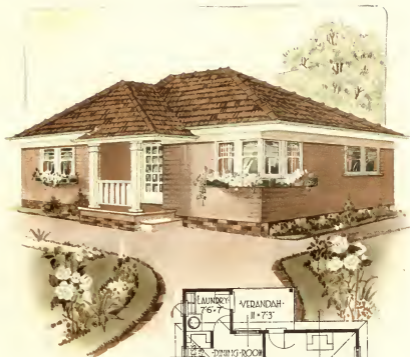


• CITY OFFICE • 7 CASTLEREAGH STREET •

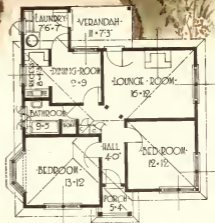
HUDSON'S

*"Ready Cut"*

HOMES ..

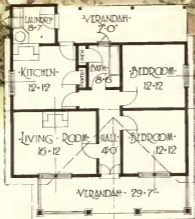


· DESIGN ·  
· (No 433)



· GEORGE HUDSON PTY LIMITED · GLEBE SYDNEY ·

HUDSON'S "Ready Cut" HOMES ..



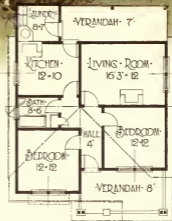
DESIGN  
No 434

CITY OFFICE • 7 CASTLEREAGH STREET •

HUDSON'S "Ready Cut" HOMES ..

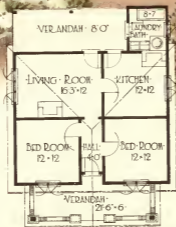


DESIGN  
No 435



• GEORGE HUDSON PTY LIMITED • GLEBE SYDNEY •

HUDSON'S "Ready Cut" HOMES ..



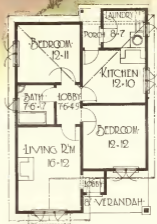
• DESIGN •  
• No 436

• CITY OFFICE • 7 CASTLEREAGH STREET •

HUDSON'S "Ready Cut" HOMES ..



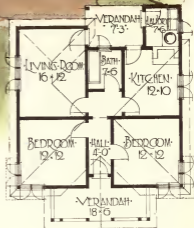
· DESIGN ·  
· N° 437



· GEORGE HUDSON PTY LIMITED · GLEBE SYDNEY ·



HUDSON'S "Ready Cut" HOMES ..



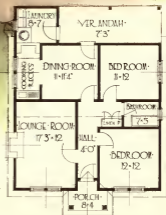
• DESIGN •  
• N<sup>o</sup> 438

• CITY OFFICE • 7 CASTLEREAGH STREET •

HUDSON'S *Ready Cut* HOMES •



• DESIGN •  
• NO 439



• GEORGE HUDSON PTY LIMITED • GLEBE SYDNEY •

HUDSON'S "Ready Cut" HOMES ..

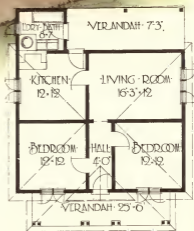


• DESIGN  
No 440.

• CITY OFFICE • 7 CASTLEREAGH STREET •



• DESIGN •  
• NO 441



• GEORGE HUDSON PTY LIMITED • GLEBE SYDNEY •

HUDSON'S "Ready Cut" HOMES ..



• DESIGN •  
• NO 442

• CITY OFFICE • 7 CASTLEREAGH STREET •

HUDSON'S

"Ready Cut"

HOMES ..



• DESIGN •  
• N<sup>o</sup> 443 •

• GEORGE HUDSON PTY LIMITED • GLEBE SYDNEY •

HUDSON'S "Ready Cut" HOMES ..



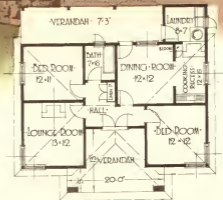
• DESIGN •  
• NO 444

• CITY OFFICE • 7 CASTLEREAGH STREET •

HUDSON'S "Ready Cut" HOMES ..



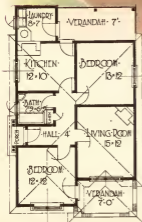
• DESIGN •  
• No 445



• GEORGE HUDSON PTY LIMITED • GLEBE SYDNEY •



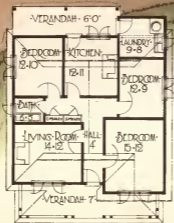
HUDSON'S "Ready Cut" HOMES ..



• DESIGN •  
• NO 446

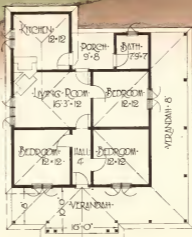
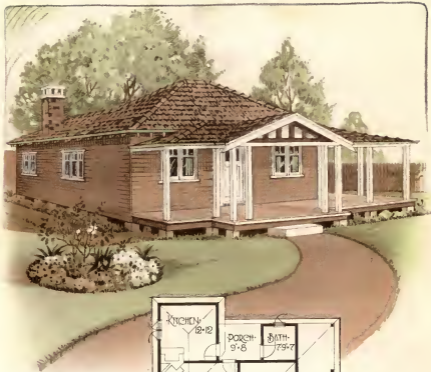
• CITY OFFICE • 7 CASTLEREAGH STREET •

HUDSON'S "Ready Cut" HOMES ..



• DESIGN •  
• N<sup>o</sup> 502 •

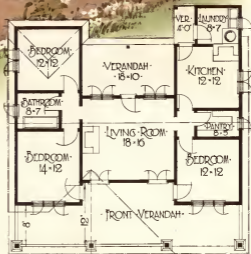
• GEORGE HUDSON PTY LIMITED • GLEBE SYDNEY •



• DESIGN •  
• N<sup>o</sup> 503

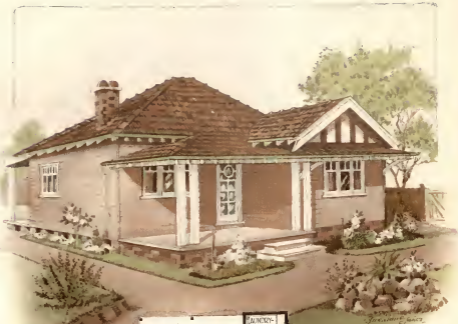
• CITY OFFICE • 7 CASTLEREAGH STREET •

HUDSON'S "Ready Cut" HOMES ..



• DESIGN •  
• NO 504

• GEORGE HUDSON PTY LIMITED • GLEBE SYDNEY •

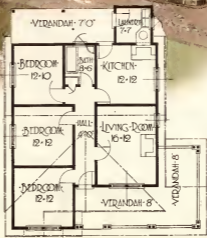


• DESIGN •  
• N°505



• CITY OFFICE • 7 CASTLEREAGH STREET •

HUDSON'S "Ready Cut" HOMES ..



·DESIGN·  
·N<sup>o</sup> 506

·GEORGE HUDSON PTY LIMITED·GLEBE SYDNEY·

1945 10.20.1945

JOHN SANDS PTY. LTD., SYDNEY