

## **LYSAGHT - GALVANISED IRON (STEEL)**

Roofing material is often referred to as 'galvanize'. It is interesting to note that the word means *"to coat iron or steel with a protective layer of zinc."*

Things have somewhat evolved in the roofing material market, since then although in roofing terms it still refers to a material called Zinalume®, which has a plain, metallic surface, almost industrial in appearance and is immensely durable and long lasting.

Colorbond® steel, which has a baked-on paint finish, resists chipping, peeling and cracking and has a long life with low maintenance. It also has outstanding anti-corrosion and now UV performance and is one of the toughest, most advanced building materials in the world.

Corrugated iron is an important element in the Australian landscape. It has had a multi-purpose use in construction applications throughout Australia from the second half of the 19th century to the present.



Australia became a major importer of the product shortly after its initial production in England, which resulted in the rapid uptake of the material at the local level to the extent that large production facilities were developed at Newcastle and Port Kembla, that operated continuously throughout the 19th and 20th centuries.

The material has interesting scientific and technical properties, and aesthetically interests have been aroused through the patterns of rust formed around the corrugations.

The material has many advantages for use as a building product, including lightness and strength, ease of transportation, and it is fixable and re-usable. Corrugated iron and steel is part of the ongoing cycle of adaptation and change.

## **HISTORY**

In England, in the 1820s, Henry Robinson Palmer discovered how to corrugate a thin sheet of iron to produce a very strong, lightweight building material.

John Lysaght, from a prosperous family of landowners in Ireland, established his iron working business in Bristol and commenced manufacturing corrugated iron in 1857. The firm exported to many countries including Australia and South America. By 1880 Lysaghts was exporting so much corrugated iron to Australia, that it established a central selling agency in Melbourne.

The original Lysaght brand of corrugated iron was *Orb*, followed in 1897 by a cheaper version called *Redcliffe*. Both brands were exported in large quantities to Australia. Other brand names followed. *Globe* was a brand produced for American and African markets but some quantities ended up in Australia.

Lysaghts manufactured galvanised sheet and plate between 1880 and 1912 in New South Wales.

Galvanising and sheet steel maker; of St. Vincent's Iron Works, St Philips, Bristol; of Swan Garden Works and Osier Bed Works,

**Wolverhampton; of Orb Iron Works, Newport; and, of Normanby Park Steel Works, Scunthorpe.**

**1857** Company established in Bristol to galvanise sheet iron by John Lysaght

**JOHN LYSAGHT,**  
1859                      PATENT  
**GALVANIZED IRON WORKS,**  
**TEMPLE BACKS,**  
**B R I S T O L,**

Manufacturer of Corrugated Galvanized  
Iron Roofing, Galvanized Sheets, Hoop  
Iron, Fencing, and Telegraph Wires,  
Wire Netting, Iron Rimmed Riddles,  
Eaves, Gutters, and Rain Water Pipes,  
Buckets, Coal Scoops, Turnip Skips,  
Milk Pans, Hand Bowls, and Basins.

---

**GALVANISED GAS & WATER WELDED TUBES & FITTINGS,**  
FOR GAS AND WATER PURPOSES.

---

All descriptions of Cast and Wrought Iron Work  
Galvanized.

---

**ESTIMATES GIVEN**  
*For Iron Roofs, and all descriptions of Wire Fencing, &c.*

**1860** Lysaght established the St Vincent's works, also known as the Netham Ironworks, occupying 4 acres of what had been the St Philip's works of Acraman and Morgan. By the 1890s they fully occupied the 13 acre site. The flamboyant office building dates from 1886, and is now home to the head office of renewable energy consultancy GL Garrad Hassan.

**1864** Employing 29 persons

**1878** Employing 400 persons

**1878** Bought the Swan Garden Iron Works in Wolverhampton

**1879** Lysaght visited Australia and formed the Victoria Galvanised Iron and Wire Co

**1881** John Lysaght's was incorporated as a limited company.

**1892** Advert: of Bristol and Wolverhampton

**JOHN LYSAGHT, LIMITED,**

TRADE MARK. TRADE MARK.

**SPECIALITIES: 1890**

Galvanized, Corrugated and Plain Sheet Iron,  
Dock and Railway Goods Sheds, Girders,  
Columns, Structural Ironwork, Galvanized Iron  
Manufactures of every description, Wire Net-  
ting, Tanks, &c., &c.

**IRON ROOFS & BUILDINGS.**

*Designs and Estimates upon Application.*

**BRISTOL:**  
ST. VINCENT'S GALVANIZED IRON WORKS.  
Constructional & Spelter Works: NETHAM:

**WOLVERHAMPTON:**  
SWAN GARDEN IRON WORKS.  
OSIER BED IRON WORKS.

**LONDON: 36, Gracechurch Street, E.C.**

TELEGRAMS: "LYSAGHT," BRISTOL, WOLVERHAMPTON, LONDON.



TRADE MARK.

# JOHN LYSAGHT, LIMITED,



TRADE MARK.

1891

## SPECIALITIES :

Galvanized, Corrugated and Plain Sheet Iron,  
Dock and Railway Goods Sheds, Girders,  
Columns, Structural Ironwork, Galvanized Iron  
Manufactures of every description, Wire Net-  
ting, Tanks, &c., &c.

## IRON ROOFS & BUILDINGS.

Designs and Estimates upon Application.

## BRISTOL :

ST. VINCENT'S GALVANIZED IRON WORKS.

Constructional & Spelter Works : NETHAM.

## WOLVERHAMPTON :

SWAN GARDEN IRON WORKS.

OSIER BED IRON WORKS.

LONDON : 36, Gracechurch Street, E.C.

TELEGRAMS : "LYSAGHT," BRISTOL, WOLVERHAMPTON, LONDON.

1892



Makers of all kinds of  
Cold Rolled and Close Annealed  
**BLACK, GALVANIZED, LEAD, AND  
TERNE COATED SHEETS,  
IN BOTH STEEL AND IRON.**

## CHARCOAL SHEETS,

FOR ELECTRICAL PURPOSES.

SHEET MILLS.—Swan Garden and Osier Bed Works,  
WOLVERHAMPTON.

GALVANIZED ROOFING & NETTING WORKS.—  
BRISTOL.

LONDON OFFICE.—36, Gracechurch Street, E.C.

**1895** Opening of Orb Works, Newport.

---

**JOHN LYSAGHT, LTD.,**  
MANUFACTURERS OF THE CELEBRATED  
"ORB," "QUEEN'S HEAD" & "REDCLIFFE"  
<sup>1899</sup>  
**Galvanized Corrugated & Flat Sheet Iron,**  
TANKS, HOLLOW-WARE, AGRICULTURAL APPLIANCES, AND GALVANIZED IRON  
MANUFACTURES OF ALL DESCRIPTIONS.  
**GALVANIZED WIRE NETTING.**  
**IRON ROOFS & BUILDINGS, BRIDGE & GIRDER WORK, &C.**  
— Buyers of Hard Spelter, Spelter Dross, and Zinc Ashes. —  
**HEAD OFFICES: ST. VINCENT'S WORKS, BRISTOL.**  
Bridge & Girder Works—**NETHAM, BRISTOL.**  
Sheet Rolling Mills—**WOLVERHAMPTON (Staff.) and NEWPORT (Mon.).**  
London Office—**30, GRACECHURCH STREET, E.C.** [4]

---

**1901** The company was registered on 28 November, to take over the business of a company of the same name, manufacturers of galvanised and black sheet iron and steel, iron and steel buildings, bridges, etc.

**1906** Selected Scunthorpe as the site for a new blast furnace plant and rolling mills, because of its abundant ore reserves, from which to produce sheet bars for the company's works at Newport.

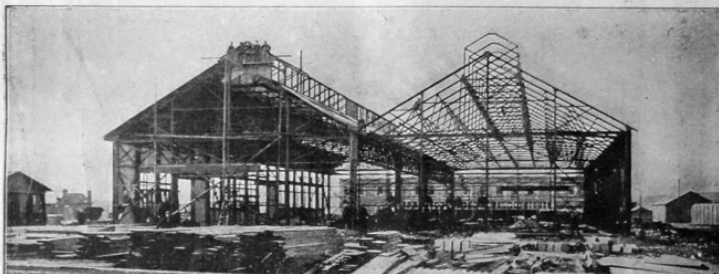
**c.1912** Installed an engine from [Galloways](#) at their Orb Works, Newport.

**1912** John Lysaght's plant was opened to the north of Scunthorpe away from the main concentrations of iron works and existing quarries. The works consisted of ironstone mines, 96 Semet Solvay coke ovens, with an output capacity of 3,000 tons of coke per week, two blast furnaces of 700 tons per week capacity, four forty-five-ton basic open-hearth steel furnaces, and a 400-ton metal mixer, with steel rolling mills.

# JOHN LYSAGHT LIMITED, 1912

**ST. VINCENT'S IRONWORKS, BRISTOL.**

ALSO AT NEWPORT (MON.) AND LONDON.



## BRIDGES, ROOFS, BUILDINGS.

CONTRACTORS TO  
**THE ADMIRALTY, WAR OFFICE, INDIA OFFICE, AND  
 CROWN AGENTS FOR THE COLONIES.**

**Abridged List of Works recently executed:**

- |   |   |  |
|---|---|--|
| Principal English, Welsh, and Irish Railways. | Suakim Railway.   | Bridges (including Swing Spans); Roofs of various kinds and spans; Steel Buildings to be used as Workshops, Factories, Markets, Abattoirs, Engine Sheds, Carriage Sheds, Stations, Warehouses and Stores, Tea Houses, Gymnasiums, Riding Schools, Drill Halls, Coaling Sheds, Coolie Sheds, Customs Houses, Light Houses, Gun - Mounting Platforms, Monolith Shoes, Well Curbs, Steel Chimneys, Landing Stages and pontoons, Coaling Stages, Slipways, Coal Bunkers, Large Flues, Malt Cases, Silo Bottoms, Large Steel Sludge Tanks for Sewerage Works. Riveted Steel Gas and Water Mains, Large Oil Storage Tanks, and |
| Uganda Railway.                               | The Manila Railway.   | <b>All the Iron &amp; Steel Work in the New Harbour Works at Gibraltar, amounting to about 12,000 tons.</b>  |
| Cape Government Railways.                     | Southern Mahratta Railway.  |  |
| South Indian Railways.                        | Trinity House Corporation.  |  |
| Bengal Nagpur Railway.                        | Principal Dock Trusts and Harbour Boards in S. & W. of England and Ireland. |  |
| Bombay, Baroda, and Central India Railway.    | London County Council.  |  |
| Buenos Ayres and Ensenada Port Railway.       | Metropolitan Asylums Board.   |  |
| Buenos Ayres and Rosario Railway.             | Bristol Corporation.  |  |
| Buenos Ayres and Pacific Railway.             | Manchester "  |  |
| Central Argentine Railway.                    | Salford "   |  |
| Puerto Cabello and Valencia Railway.          | Dublin "  |  |
| Central Railway of Peru.                      | Belfast "   |  |
| Leopoldina Railway.                           | Plymouth "  |  |
| Conde D'eu Railway.                           | Portsmouth "  |  |
| Villa Mario and Rufino Railway.               | Exeter "  |  |
| Western Railway of Havana.                    | Cardiff "   |  |
| Interoceanic Railway of Mexico.               | Swansea "   |  |
| South Western of Venezuela Railway.           | Llandely "  |  |
| Algeciras (Gibraltar) Railway.                | Birmingham "  |  |
| Cartagena and Herrerias Steam Tramway.        | Gloucester "  |  |
| Santa Fe and Cordova Railway.                 | Bath "  |  |
| Great Southern of Spain Railway.              | Southampton "   |  |
| Argentine Great Western Railway.              | Newport (Mon.) "  |  |
| Buenos Ayres Western Railway.                 | Sunderland "  |  |
|   | Cork "  |  |
|   | and many others.  |  |

# JOHN LYSAGHT, Ltd.,

1912

**PANEL PLATES**  
for Railway Carriage  
Work.  
**HIGHLY FINISHED**  
**SHEETS** for Special  
Purposes.

**TESTED AND GUAR-  
ANTEED SHEETS**  
for Dynamos, Trans-  
formers, and Turbo-  
Alternators.

**BEST COLD ROLLED** HYDRAULICALLY  
**AND CLOSE ANNEALED** FLATTENED.

## Steel Sheets

FOR ALL  
WORKING-UP  
PURPOSES.

Machine-cut circles up to 48 in. diameter.

**CHILLED ROLLS**  
for  
**Sheet Mills,  
Tinplate Mills,  
&c.**

**CLOSE ANNEALING  
COVERS.**

**SOLID WELDED  
CALVANIZING BATHS.**

*For Galvanized Flat and Corrugated Sheets,  
Wire Netting, Tanks, Cisterns, Hollow-ware,  
and Constructional Iron Work see other adver-  
tisements. Address—St. Vincent Works, Bristol.*

**Orb Works, NEWPORT (Mon.)**



# JOHN LYSAGHT, LTD.,

1912

PANEL PLATES  
for Railway Carriage  
Work.

HIGHLY FINISHED  
SHEETS for Special  
Purposes.

TESTED AND  
GUARANTEED  
SHEETS

for Dynamos, Trans-  
formers, and Turbo-  
Alternators.

BEST COLD ROLLED HYDRAULICALLY  
AND CLOSE ANNEALED FLATTENED.

## STEEL SHEETS

Sheets from 10 to 24-gauge are flattened  
(Dead Flat). A Specification 6 ft. long  
by 24, 30, and 36 ins. wide in 10 to 28-  
gauge can be despatched **from**  
**stock immediately.**

FOR ALL  
WORKING-UP  
PURPOSES.

MACHINE CUT  
CIRCLES  
up to 48 in. diameter.

CHILLED ROLLS  
for Sheet Mills, Tin-  
plate Mills, &c.

CLOSE ANNEALING  
COVERS.

SOLID WELDED  
GALVANIZING BATHS.

*For Galvanized Flat and Corrugated Sheets, Wire Netting, Tanks, Cisterns,  
Hollow-Wares, and Constructional Iron Work see other advertisements.  
Address—St. Vincent Works, Bristol.*

### Orb Works, NEWPORT (Mon.)

**1913** A third blast furnace was put into operation at Scunthorpe.

**1914** Galvanizers and constructional engineers. Specialities: galvanized sheets, galvanized wire netting, tanks, hollow ware, black steel sheets, constructional steel work.

**1917** a fourth furnace of 1,000 tons per week capacity was put into blast at Scunthorpe.

**1919** Lysaghts were still in control of various branches of the business but the Trustees of the late John Lysaght sold the ordinary shares (the great majority of the issued shares) to the chairman Mr Seymour Berry and his friends (D. R. Llewellyn, and Viscountess Rhondda).

**1919** The Lysaghts had owned two rolling mills, Swan Garden and Osier Bed, in Wolverhampton and knew the Sankeys. It was suggested to George H. Sankey that Berry would buy Sankey shares. Lysaghts acquired a controlling interest in Joseph Sankey and Sons Ltd of Manor Iron Works, Wolverhampton, Albert Street and Bankfield Works, Bilston, and the Hadley Castle Works, Wellington. Joseph Sankey retained its own identity. Joseph Sankey & Sons Ltd became the sole subsidiary of John Lysaght Ltd. On 3 December, Berry became the new chairman of Sankeys; Llewellyn also joined the board.

**1920** Guest Keen and Nettlefolds acquired John Lysaght including the works at Newport ("the largest and best equipped in the UK for manufacture of black and galvanised sheet"), large constructional iron and steel works at Bristol, and five blast furnaces and an up-to-date steel works and adjoining ironstone reserves at Scunthorpe. This purchase also included the whole of the ordinary shares of Joseph Sankey and Sons. Mr Seymour Berry, chairman of John Lysaght, and another director would join the board of GKN; 2 GKN directors would join the board of John Lysaght.

**1921** GKN had acquired most of the preference shares in John Lysaght as well as 99% of the Ordinary shares.

**1922** A fifth furnace of 1,200 tons per week capacity was put into blast at Scunthorpe. The steel plant could produce up to 5,000 tons of finished steel per week much of which went to the plate mills of South Wales.

**1922** Installed an engine from Galloways at their Orb Works, Newport.

# JOHN LYSAGHT L<sup>TD</sup>

## BRISTOL.

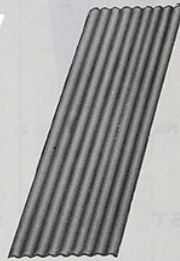
### IRONMASTERS AND GALVANIZERS.

MANUFACTURERS OF GALVANIZED CORRUGATED AND FLAT SHEETS.

1927



BRAND.



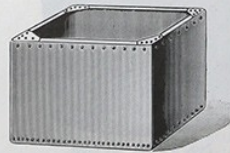
(Code No. 1.)



BRAND.



(Code No. 2.)



(Code No. 3.)

BLACK SHEETS, CISTERNS,  
CYLINDERS, GUTTERS, FLASH-  
INGS, RAIN WATER PIPES,  
RIDGING, SKYLIGHT SHEETS,  
ROOF TILES, ROOF VENTILA-  
TORS, WIRE NETTING.

GALVANIZING DONE  
FOR THE TRADE,



(Code No. 4.)

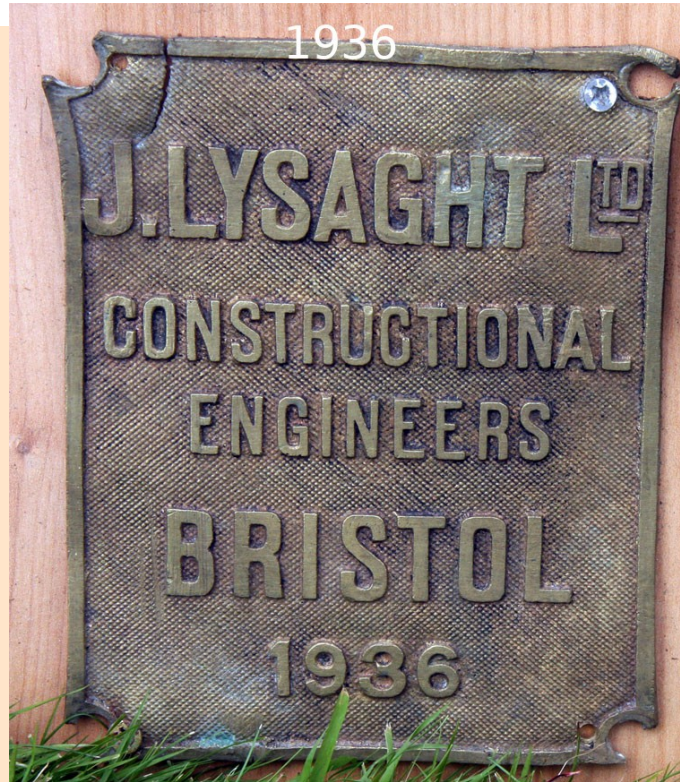
*Prices Given on Application.*

LONDON OFFICE: 66 Cannon Street, London, E.C. 4.

**1929** The galvanizing works was transferred from Bristol to Newport; finishing would still be done at Bristol.

**1930** Amalgamation of GKN's South Wales Steel works with those of Baldwins to form British Iron and Steel Co

**1839** Aircraft suppliers



**JOHN LYSAGHT LIMITED**  
1940 *makers of*  
**HIGH - CLASS  
SHEET STEEL**  
**Black and Galvanized**

---

MOTOR BODY SHEETS  
RAILWAY CARRIAGE PANELS  
VITREOUS ENAMELLING SHEETS

---

DYNAMO AND TRANSFORMER SHEETS

---

GALVANIZED CORRUGATED AND FLAT SHEETS

---

CONSTRUCTIONAL STEELWORK

---

GALVANIZED HOLLOWWARE  
WIRE NETTING

---

CHILLED ROLLS FOR SHEET MILLS

---

GALVANIZING AND ANNEALING EQUIPMENT

---

SPECIAL ALLOY AND CARBON STEELS

---

*Head Office and Works:*  
**ORB IRON WORKS, NEWPORT, MON.**

*Also at*  
**BRISTOL, SCUNTHORPE, WOLVERHAMPTON & LONDON**

**1942-5** Re-built five locomotives with parts from Peckett and Sons.

1944

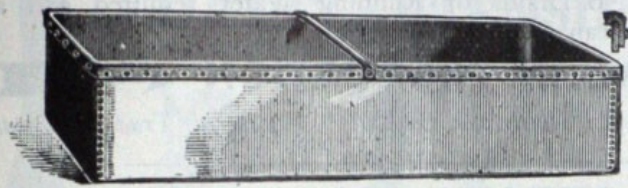
**JOHN LYSAGHT  
LIMITED**

*Steel Sheets  
Constructional Steelwork*

**BRISTOL · NEWPORT (MON) · SCUNTHORPE · LONDON**

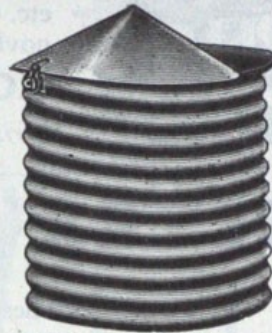
7280-8

# AGRICULTURAL REQUISITES GALVANIZED CHAIN LINK FENCING ETC.



## CATTLE

"Redcliffe" Brand. Cribs, Feeding Pans, Troughs, Racks, Mangers, Food Barrows, etc.



## CORN BINS

"Redcliffe" Brand. Galvanized Corn Bins of all types, sizes and shapes.



## DAIRY EQUIPMENT

"Redcliffe" Brand. Sterilizing Chests, Washing Tanks, Sterilizing Stools, Stable Pails, etc.



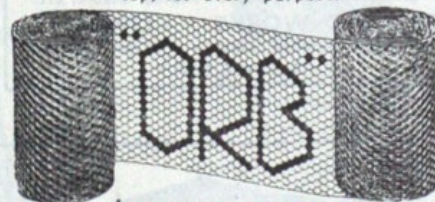
## CISTERNS

"Redcliffe" Brand. Corrugated, cylindrical, flat-sided, open or closed top, for every purpose.



## PIGS & SHEEP

"Redcliffe" Brand. Troughs, Shelters, Automatic Feeders and Automatic Drinking Troughs, Sheep Dipping Baths and Drainers, Lamb Racks, etc.



## CHAIN LINK FENCING

"Orb" Brand. Galvanized Fencing for Tennis, Gardens, Farms, etc., etc.

# JOHN LYSAGHT LTD.

BRISTOL, 2

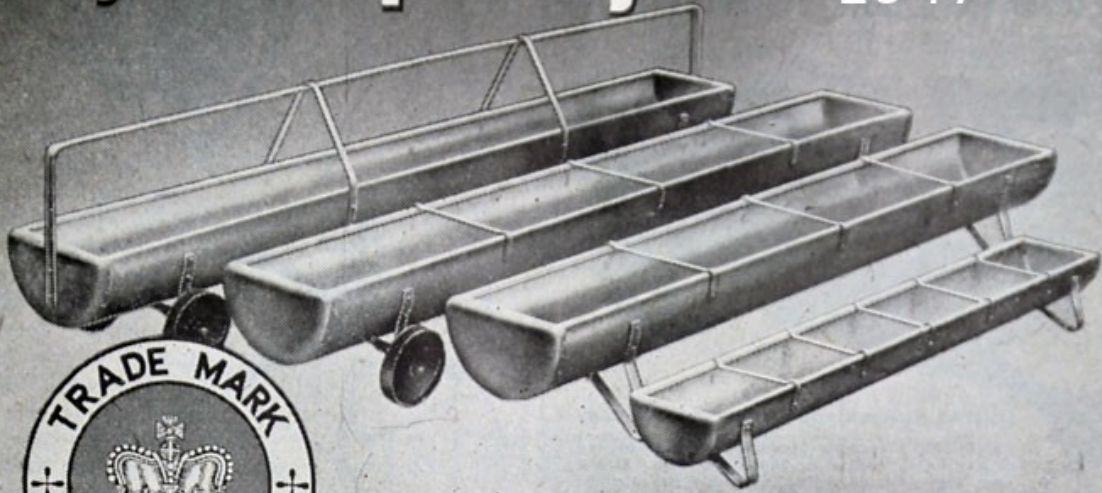
'Phone : 77601 'Grams : "LYSAGHT, BRISTOL"

**1946** British Rollmakers Corporation acquired the rollmaking interests of John Lysaght Limited.

**1947** John Lysaght's Bristol Works were formed as a private company

# Pig & Sheep Troughs

1947



Made by

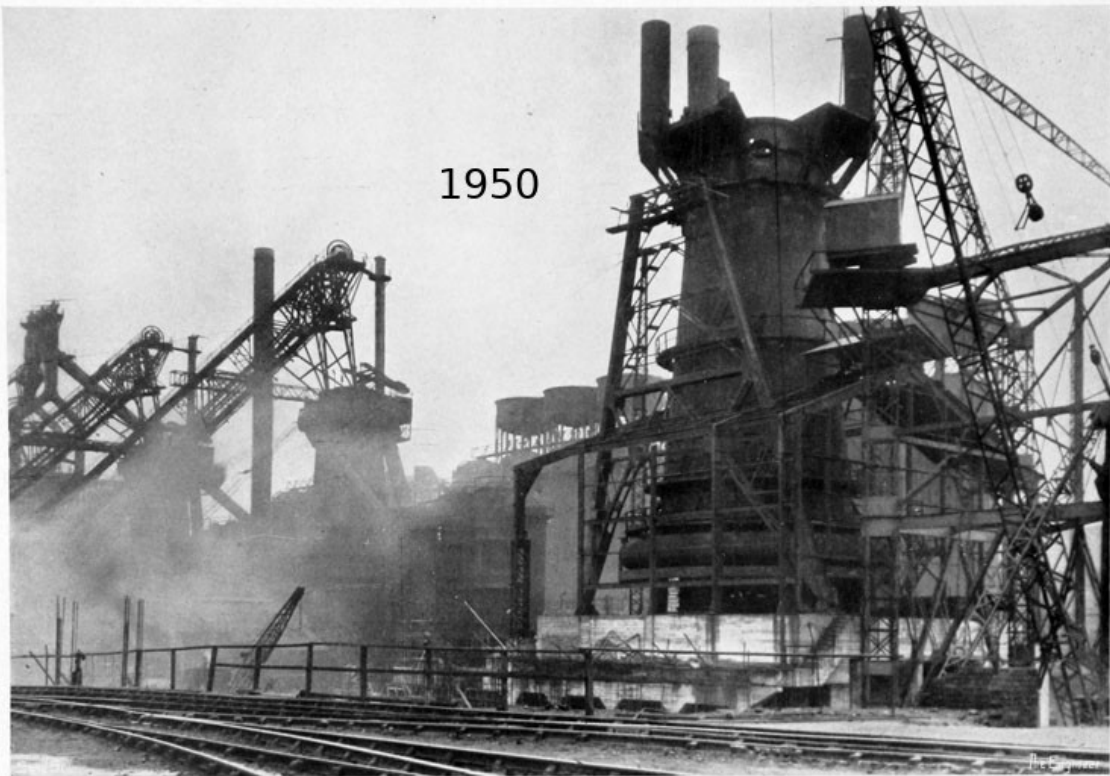
# LYSAGHT

10263

Available in limited sizes for early despatch. From your usual stockists.

JOHN LYSAGHT LIMITED, BRISTOL 2

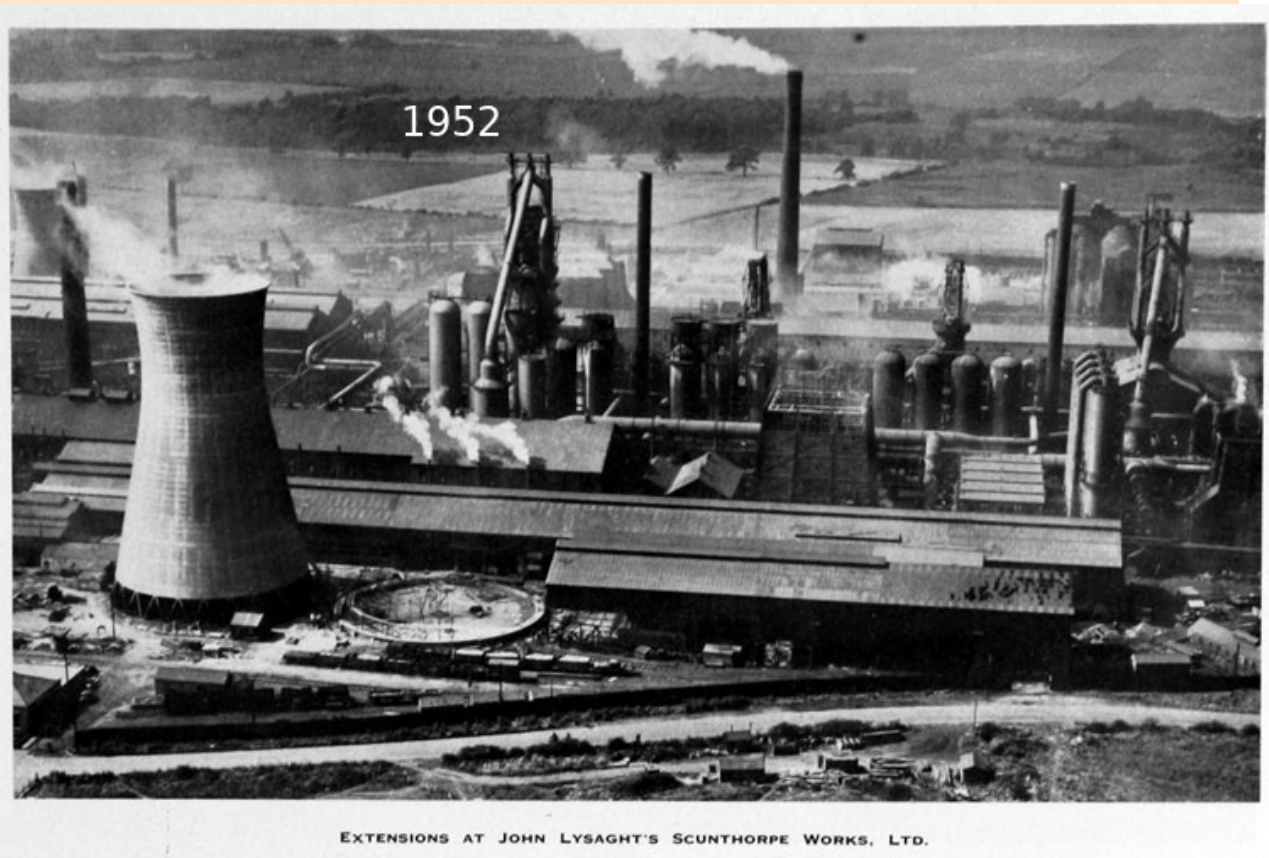
1950



BLAST-FURNACE IN COURSE OF CONSTRUCTION—JOHN LYSAGHT'S SCUNTHORPE WORKS, LTD.

**1951** Scunthorpe works nationalised under the Iron and Steel Act; became part of the Iron and Steel Corporation of Great Britain.

**1951** The Lysaght Works of Steel Company of Wales were nationalised under the Iron and Steel Act; became part of the Iron and Steel Corporation of Great Britain



**1955** Private sale of John Lysaght's Scunthorpe works by the Holding and Realisation Agency to GKN including the wholly-owned subsidiary Scunthorpe Rod Mill Ltd.



1960

# LYSAGHT'S

LONDON WAREHOUSE



FROM STOCK

JOHN LYSAGHT (SERVICES) LIMITED  
34/35, QUEEN STREET, LONDON, E.C.4

Telephone: CITY 5070



ACCREDITED SHEET STOCKHOLDERS FOR THE STEEL COMPANY OF WALES LTD

Birmingham Office: White House, 111, New Street, Birmingham 2

Telephone: Midland 2827

**1966** The Lysaght name was still in use by GKN to identify works such as Scunthorpe.

**1971** John Lysaght (Australia) Pty Ltd was restructured by GKN as a joint venture with B.H.P. so that its development at Westernport could be financed separately from the parent company [23].































