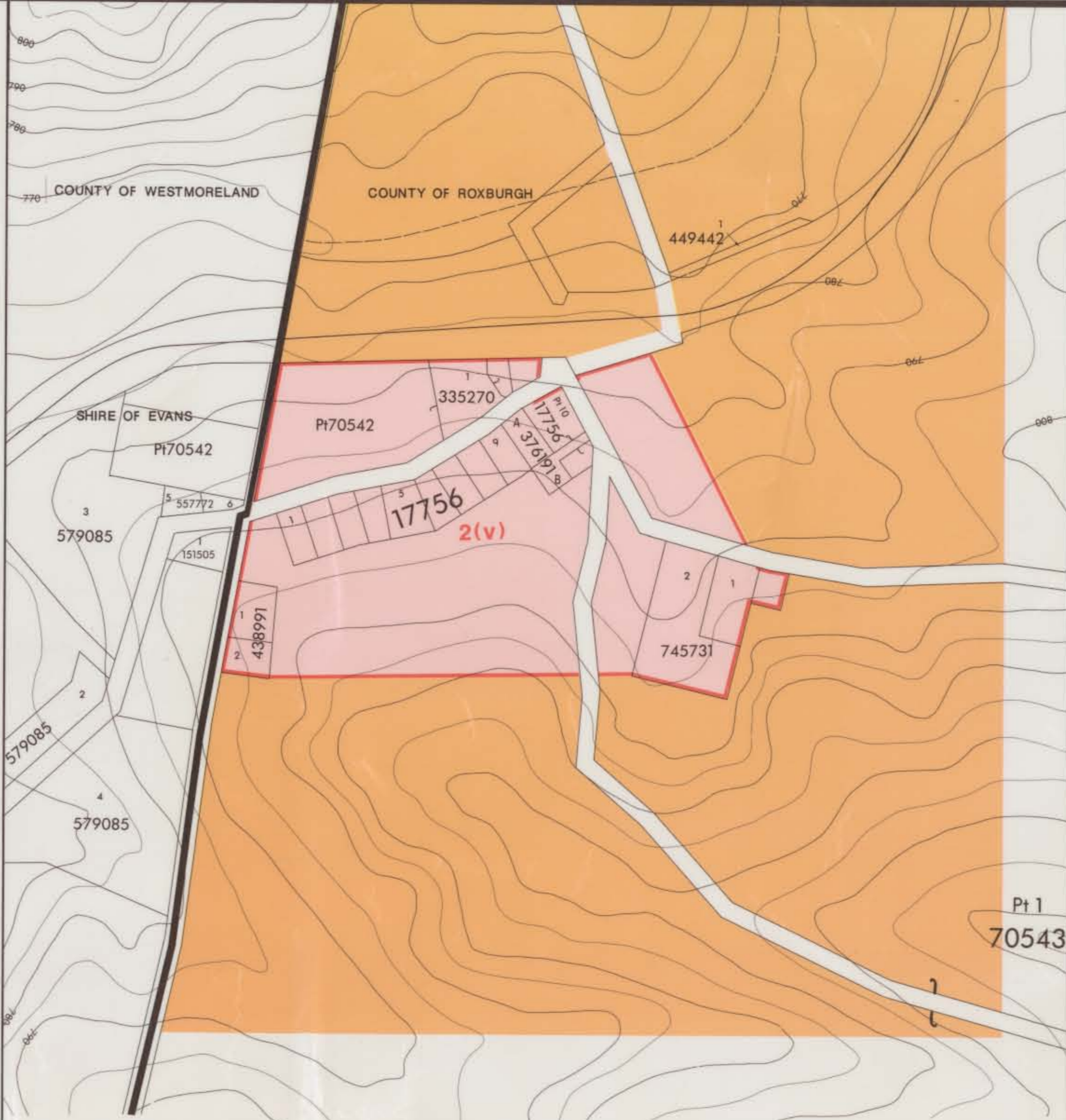
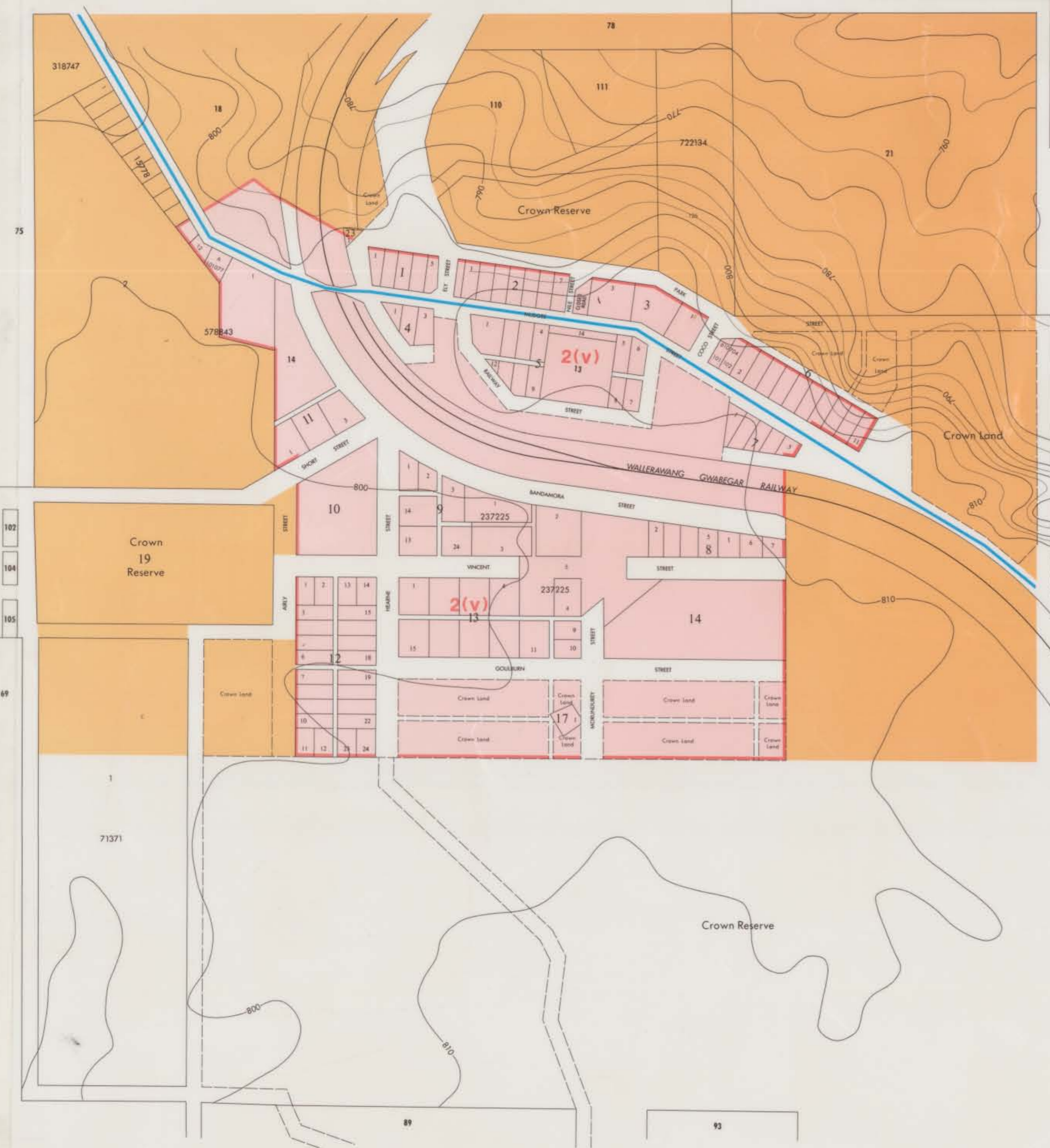


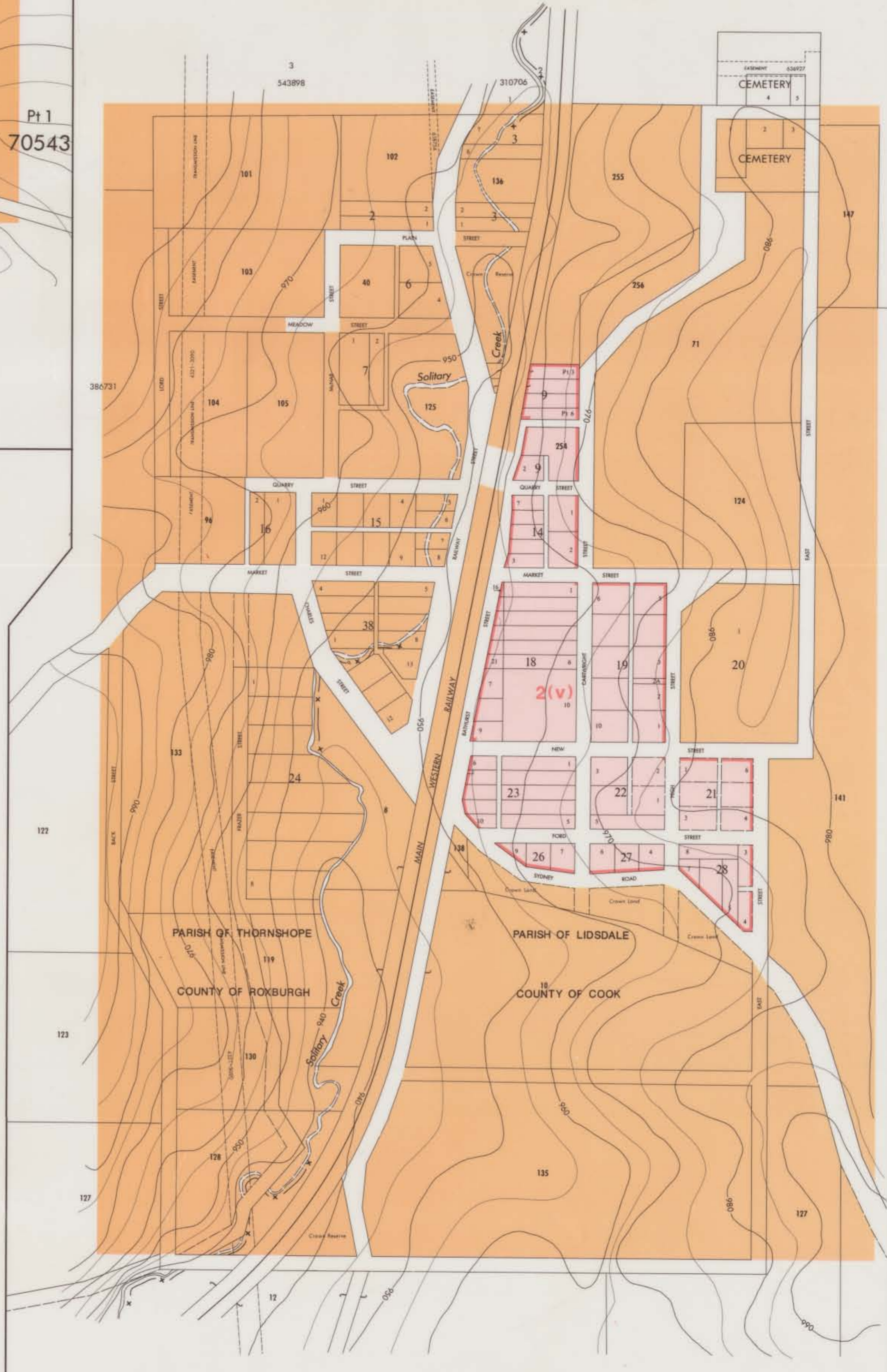
CULLEN BULLEN
PARISH OF CULLEN BULLEN
COUNTY OF ROXBURGH



TARANA
PARISH OF THORNHOPE
COUNTY OF ROXBURGH & WESTMORELAND



CAPERTEE
PARISH OF BANDAMORA
COUNTY OF ROXBURGH



RYDAL
PARISH OF THORNHOPE & LIDSDALE
COUNTY OF ROXBURGH & COOK

INDEX	
ZONES	
RURAL (GENERAL) 1(a)	
RURAL (SMALL HOLDINGS) 1(c)	NIL
RURAL (FUTURE URBAN) 1(d)	NIL
RURAL (FORESTRY) 1(f)	NIL
RESIDENTIAL 2(a)	NIL
VILLAGE 2(v)	
BUSINESS 3	NIL
INDUSTRIAL 4	NIL
OPEN SPACE 6	NIL
NATIONAL PARKS AND NATURE RESERVES 8	NIL
GENERAL	
L.E.P. BOUNDARY (CITY COUNCIL BOUNDARY)	
ARTERIAL ROADS	
ENVIRONMENTALLY SENSITIVE	NIL



CERTIFIED IN ACCORDANCE WITH THE ENVIRONMENTAL PLANNING AND ASSESSMENT ACT, 1979 AND REGULATIONS

ENVIRONMENTAL PLANNING AND ASSESSMENT ACT, 1979
CITY OF GREATER LITHGOW
VILLAGES OF CAPERTEE, CULLEN BULLEN, RYDAL AND TARANA

LOCAL ENVIRONMENTAL PLAN 1994

GENERAL MANAGER DATE 1 July 1994

DRAWN BY	FLEXIGRAPHICS	DATE	1994
PLANNER	Ian Rufus	DATE	October 1994
MANAGER, ENVIRONMENTAL AND PLANNING SERVICES	R. E. Darney	DATE	October 1994
COUNCIL FILE NO.	A138/01/004/00		
DEPT. FILE NO.	S90/01255		
GOVT. GAZETTE OF	2nd December 1994		

STATEMENT OF RELATIONSHIP WITH OTHER PLANS
REPEALS INTERIM DEVELOPMENT ORDER NO.1-CITY OF GREATER LITHGOW AND INTERIM DEVELOPMENT ORDER NO.1-SHIRE OF BLAXLAND

BASE MAPS SUPPLIED BY THE CENTRAL MAPPING AUTHORITY OF N.S.W. 1988