

STAINES



TRADE MARK.

1902.

Linoleum.

SELECTED DESIGNS.



From the collections of Sydney Living Museums / Historic Houses Trust of NSW



# STAINES LINOLEUM.



**INLAID, CARPET INLAID, GRANITE, PRINTED LINOLEUM, AND  
PRINTED CORK CARPET,**

MANUFACTURED BY THE

**LINOLEUM MANUFACTURING COMPANY, LTD.,**

**6, OLD BAILEY, LONDON, E.C.**

**WORKS AT STAINES, MIDDLESEX.**

**TELEGRAMS: "LINO" LONDON.**



TRADE MARK

**TELEPHONE NO. 876, HOLBORN.**

**INSTRUCTIONS FOR LAYING AND WASHING.**—Staines Inlaid and Carpet Inlaid Linoleum will lie better and wear longer if pasted all over the back of the cloth.

Scrub well with a hard brush, using water and good soap. Rub the surface over when dry with a little "Reviver" on a housemaid's flannel.

THE HOLLAND & SON, PRINTERS, FINSBURY, LONDON.

TELEGRAPH CODE FOR STAINES LINOLEUMS:—"LINO," LONDON.

Ship by Sailing Vessel - - SLEEVELESS  
 Ship by Cargo Steamer - - SLEET  
 Ship by Mail Steamer - - SLEEPINESS

Send by return:

CODE FOR PLAIN LINOLEUMS AND CORK CARPETS :-

1 piece	Quaint	No.	18 ex. Aspirant	No.	3,018	Dazzle
2 pieces	Qualify	"	16 Artifice	"	3,019	Daytime
3 "	Quarter	"	18 Article	"	3,800	Dayspring
4 "	Quaver	"	19 Artistic	"	16 cc	Cabin
5 "	Quick	"	20 Artizan	"	18 cc	Cable
6 "	Quiet	"	800 Armoury	"	19 cc	Captain
10 "	Quarry	"	2,017 Buoy	"	800 cc	Cluster
12 "	Quiver	"	2,018 Bustle	"	2,016 cc	Calamine
15 "	Question	"	2,019 Buttress	"	2,018 cc	Calamitous
20 "	Quill	"	2,800 Buzz	"	2,019 cc	Calamity
25 "	Quest	"		"	2,020 cc	Calcine
30 "	Quaff	"		"	2,800 cc	Calcareous
50 "	Quarto	"		"		

CODE WORDS FOR INLaid OR PRINTED PATTERNS WILL BE FOUND ON THE PATTERN SHEETS.

Please note the Qualities are distinguished thus:-

First Gauge Inlaid	-	-	-	-	Nos.	1 to 1,999
Second Gauge Inlaid	-	-	-	-	"	2,000 " 2,999
First Gauge Carpet Inlaid	-	-	-	-	"	5,000 " 5,999
Second Gauge Carpet Inlaid	-	-	-	-	"	7,000 " 7,999
First Gauge Granites	-	-	-	-	"	G 1 " G 99
Second Gauge Granites	-	-	-	-	"	G 201 " G 299
Printed Linoleum	-	-	-	-	"	3,000 " 3,999
Printed Cork Carpet	-	-	-	-	"	4,000 4,999

**STAINES CARPET INLAID LINOLEUM  $\frac{8}{4}$  WIDE N<sup>o</sup> 5063**

MADE ALSO IN PASSAGE CLOTH 2FT. AND 3FT. WIDE.

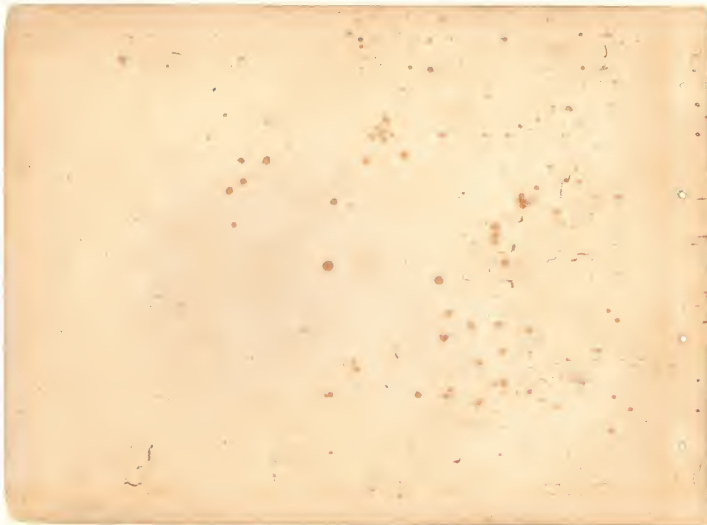
CODE WORD—"LANDHOLDER"

*2/60 yd. -*



**SOLID COLOURS. ORIGINAL PATENTEES & SOLE MANUFACTURERS.**

From the collections of Sydney Living Museums / Historic Houses Trust of NSW



From the collections of Sydney Living Museums / Historic Houses Trust of NSW



From the collections of Sydney Living Museums / Historic Houses Trust of NSW



TRADE MARK.

No. 5146

STAINES CARPET INLAID LINOLEUM  $\frac{8}{4}$  WIDE

CODE WORD—"LATTICE."

BORDER 12in. WIDE, No. 5078.

THE LINOLEUM MANUFACTURING CO., LIMITED, 6, OLD BAILEY, LONDON, E.C.

*Spinks*





From the collections of Sydney Living Museums / Historic Houses Trust of NSW



**TRADE MARK.**

**No. 5147**

**STAINES CARPET INLAID LINOLEUM  $\frac{3}{4}$  WIDE**

**CODE WORD—"LAUDABLE."**

**BORDER 12in. WIDE, No. 5058.**

**THE LINOLEUM MANUFACTURING CO., LIMITED, 6, OLD BAILEY, LONDON, E.C.**



From the collections of Sydney Living Museums / Historic Houses Trust of NSW



TRADE MARK.

**No. 5158**

**STAINES CARPET INLAID LINOLEUM  $\frac{3}{4}$  WIDE**

**CODE WORD—"LAUNDRESS."**

**BORDER 12in. WIDE, No. 5168.**

**THE LINOLEUM MANUFACTURING CO., LIMITED, 6, OLD BAILEY, LONDON, E.C.**



From the collections of Sydney Living Museums / Historic Houses Trust of NSW



**TRADE MARK.**

**No. 5162**

**STAINES CARPET INLAID LINOLEUM 9/4 WIDE**

**CODE WORD—"LAUREL"**

**THE LINOLEUM MANUFACTURING CO., LIMITED, 6, OLD BAILEY, LONDON, E.C.**



From the collections of Sydney Living Museums / Historic Houses Trust of NSW



**TRADE MARK.**

**No. 8**

**STAINES INLAID LINOLEUM  $\frac{3}{4}$  AND  $\frac{3}{4}$  WIDE**

**CODE WORD—"IVORY."**

**BORDER 9in. WIDE, No. 16.**

**THE LINOLEUM MANUFACTURING CO., LIMITED, 6, OLD BAILEY, LONDON, E.C.**

*2/10/10*



**STAINES INLAID LINOLEUM  $\frac{3}{4}$  &  $\frac{1}{4}$  WIDE No. 93.**

ALSO BORDERED PASSAGE CLOTH  $\frac{1}{4}$  WIDE 93107.

CODE WORD—"INVITER."



**SOLID COLOURS THROUGH TO THE BACK, ORIGINAL PATENTEES & SOLE MANUFACTURERS**

From the collections of Sydney Living Museums / Historic Houses Trust of NSW



From the collections of Sydney Living Museums / Historic Houses Trust of NSW



From the collections of Sydney Living Museums / Historic Houses Trust of NSW



**TRADE MARK.**

**No. 330**

**STAINES INLAID LINOLEUM  $\frac{3}{4}$  WIDE**

**CODE WORD—"INDUCTILE."**

**BORDER 12in. WIDE, No. 340.**

**THE LINOLEUM MANUFACTURING CO., LIMITED, 6, OLD BAILEY, LONDON, E.C.**



From the collections of Sydney Living Museums / Historic Houses Trust of NSW



TRADE MARK.

No. 350

STAINES INLAID LINOLEUM  $\frac{3}{4}$  WIDE

CODE WORD—"INEPTITUDE."

BORDER 9in. WIDE, No. 360.

THE LINOLEUM MANUFACTURING CO., LIMITED, 6, OLD BAILEY, LONDON, E.C.



From the collections of Sydney Living Museums / Historic Houses Trust of NSW



TRADE MARK.

No. 373

STAINES INLAID LINOLEUM  $\frac{3}{4}$  WIDE

CODE WORD—"INFIRMITY."

THE LINOLEUM MANUFACTURING CO., LIMITED, 6, OLD BAILEY, LONDON, E.C.





From the collections of Sydney Living Museums / Historic Houses Trust of NSW



TRADE MARK.

No. 383

STAINES INLAID LINOLEUM  $\frac{3}{4}$  WIDE

CODE WORD—"INFOLDING."

THE LINOLEUM MANUFACTURING CO., LIMITED, 6, OLD BAILEY, LONDON, E.C.



From the collections of Sydney Living Museums / Historic Houses Trust of NSW



**TRADE MARK.**

**No. 110**

**STAINES INLAID LINOLEUM  $\frac{4}{4}$  AND  $\frac{3}{4}$  WIDE**

**CODE WORD—"INFANCY."**

**BORDER 12in. WIDE, No. 140.**

**THE LINOLEUM MANUFACTURING CO., LIMITED, 6, OLD BAILEY, LONDON, E.C.**



From the collections of Sydney Living Museums / Historic Houses Trust of NSW



**TRADE MARK.**

**No. 134**

**STAINES INLAID LINOLEUM  $\frac{3}{4}$  WIDE**

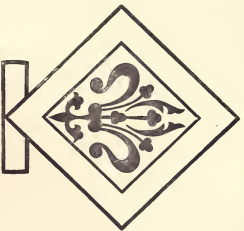
**CODE WORD—"INCISORY."**

**BORDER 18in. WIDE, No 144, AND 12in. WIDE, No 154.**

**THE LINOLEUM MANUFACTURING CO., LIMITED, 6, OLD BAILEY, LONDON, E.C.**



From the collections of Sydney Living Museums / Historic Houses Trust of NSW



**TRADE MARK.**

**No. 331**

**STAINES INLAID LINOLEUM 8/4 WIDE**

**CODE WORD—"INDUCTION."**

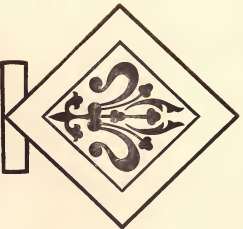
**BORDER 9in. WIDE, No. 341.**

**THE LINOLEUM MANUFACTURING CO., LIMITED, 6, OLD BAILEY, LONDON, E.C.**





From the collections of Sydney Living Museums / Historic Houses Trust of NSW



**TRADE MARK.**

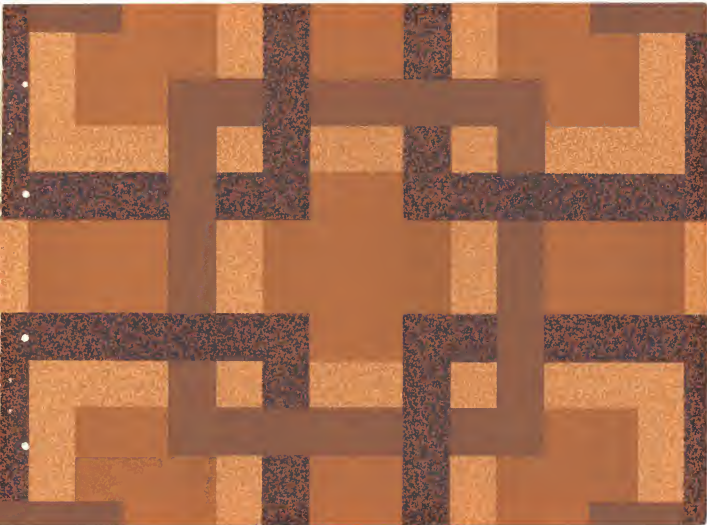
**No. 2012**

**STAINES INLAID LINOLEUM  $\frac{3}{4}$  WIDE**

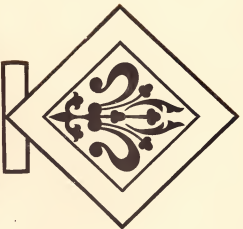
**(SECOND GAUGE.)**

**CODE WORD—"PEDESTRIAN."**

**THE LINOLEUM MANUFACTURING CO., LIMITED, 6, OLD BAILEY, LONDON, E.C.**



From the collections of Sydney Living Museums / Historic Houses Trust of NSW



**TRADE MARK.**

**No. 2023**

**STAINES INLAID LINOLEUM 8/4 WIDE**

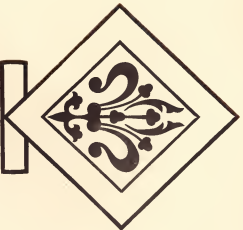
**(SECOND GAUGE.)**

**CODE WORD—"PEARLINESS."**

**THE LINOLEUM MANUFACTURING CO., LIMITED, 6, OLD BAILEY, LONDON, E.C.**



From the collections of Sydney Living Museums / Historic Houses Trust of NSW



**TRADE MARK.**

**No. 2051**

**STAINES INLAID LINOLEUM 8/4 WIDE**

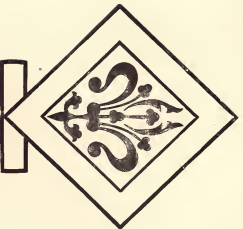
(SECOND GAUGE.)

**CODE WORD—"PEEVISH."**

**THE LINOLEUM MANUFACTURING CO., LIMITED, 6, OLD BAILEY, LONDON, E.C.**



From the collections of Sydney Living Museums / Historic Houses Trust of NSW



**TRADE MARK.**

**No. 2013**

**STAINES INLAID LINOLEUM 8/4 WIDE**

**(SECOND GAUGE.)**

**CODE WORD—"PEDICLE."**

**THE LINOLEUM MANUFACTURING CO., LIMITED, 6, OLD BAILEY, LONDON, E.C.**





From the collections of Sydney Living Museums / Historic Houses Trust of NSW



TRADE MARK.

No. 2015

STAINES INLAID LINOLEUM  $\frac{3}{4}$  WIDE

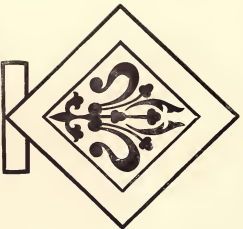
(SECOND GAUGE.)

CODE WORD—"PEDIMENT."

THE LINOLEUM MANUFACTURING CO., LIMITED, 6, OLD BAILEY, LONDON, E.C.



From the collections of Sydney Living Museums / Historic Houses Trust of NSW



**TRADE MARK.**

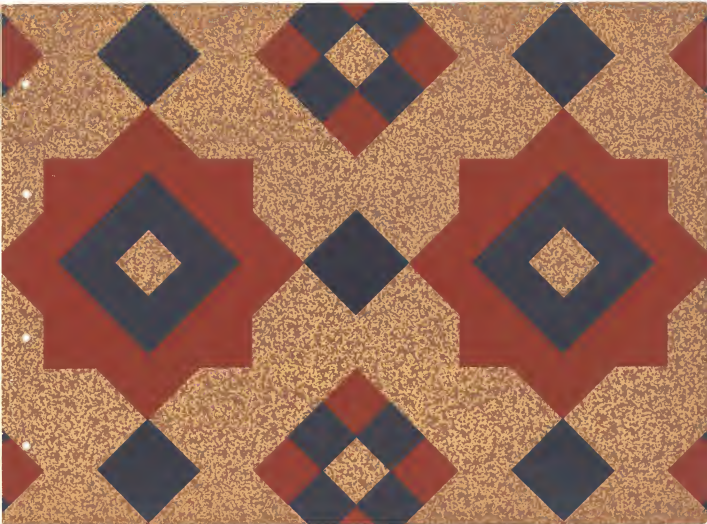
**No. 2048**

**STAINES INLAID LINOLEUM  $\frac{3}{4}$  WIDE**

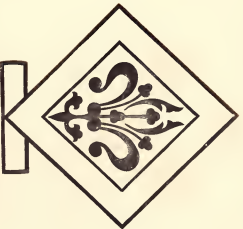
**(SECOND GAUGE.)**

**CODE WORD—"PECUNIARY."**

**THE LINOLEUM MANUFACTURING CO., LIMITED, 6, OLD BAILEY, LONDON, E.C.**



From the collections of Sydney Living Museums / Historic Houses Trust of NSW



**TRADE MARK.**

**No. 2055**

**STAINES INLAID LINOLEUM 8/4 WIDE**

**(SECOND GAUGE.)**

**CODE WORD—"PELAGIC."**

**THE LINOLEUM MANUFACTURING CO., LIMITED, 6, OLD BAILEY, LONDON, E.C.**



From the collections of Sydney Living Museums / Historic Houses Trust of NSW



**TRADE MARK.**

**No. 2064**

**STAINES INLAID LINOLEUM  $\frac{3}{4}$  WIDE**

**(SECOND GAUGE.)**

**CODE WORD—"PENCIL."**

**THE LINOLEUM MANUFACTURING CO., LIMITED, 6, OLD BAILEY, LONDON, E.C.**





From the collections of Sydney Living Museums / Historic Houses Trust of NSW



**TRADE MARK.**

**No. 2073**

**STAINES INLAID LINOLEUM 3/4 WIDE**

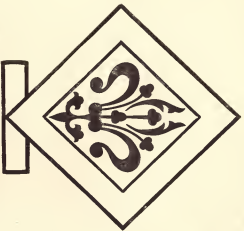
**(SECOND GAUGE.)**

**CODE WORD—"PENETRANT."**

**THE LINOLEUM MANUFACTURING CO., LIMITED, 6, OLD BAILEY, LONDON, E.C.**



From the collections of Sydney Living Museums / Historic Houses Trust of NSW



**TRADE MARK.**

**No. 7038**

**STAINES CARPET INLAID LINOLEUM  $\frac{3}{4}$  WIDE**

**(SECOND GAUGE.)**

**CODE WORD—"RAGMAN."**

**THE LINOLEUM MANUFACTURING CO., LIMITED, 6, OLD BAILEY, LONDON, E.C.**



From the collections of Sydney Living Museums / Historic Houses Trust of NSW



**TRADE MARK.**

**No. 7003**

**STAINES CARPET INLAID LINOLEUM 8/4 WIDE**

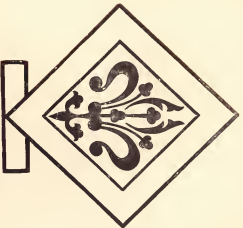
**(SECOND GAUGE.)**

**CODE WORD "RABBIT."**

**THE LINOLEUM MANUFACTURING CO., LIMITED, 6, OLD BAILEY, LONDON, E.C.**



From the collections of Sydney Living Museums / Historic Houses Trust of NSW



**TRADE MARK.**

**No. 7035**

**STAINES CARPET INLAID LINOLEUM  $\frac{3}{4}$  WIDE**

**(SECOND GAUGE.)**

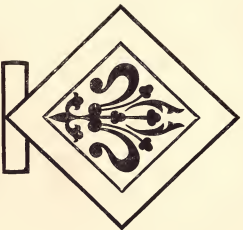
**CODE WORD—"RAGEFULL."**

**THE LINOLEUM MANUFACTURING CO., LIMITED, 6, OLD BAILEY, LONDON, E.C.**





From the collections of Sydney Living Museums / Historic Houses Trust of NSW



TRADE MARK.

No. 7040

STAINES CARPET INLAID LINOLEUM  $\frac{3}{4}$  WIDE

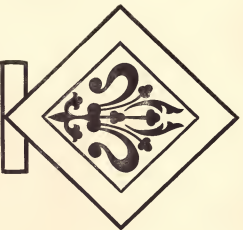
(SECOND GAUGE.)

CODE WORD—"RAGWORT."

THE LINOLEUM MANUFACTURING CO., LIMITED, 6, OLD BAILEY, LONDON, E.C.



From the collections of Sydney Living Museums / Historic Houses Trust of NSW



**TRADE MARK.**

**No. 7044**

**STAINES CARPET INLAID LINOLEUM 8/4 WIDE**

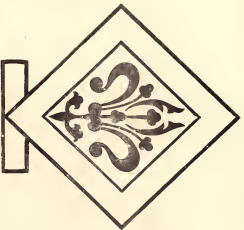
**(SECOND GAUGE.)**

**CODE WORD—"RAINBOW."**

**THE LINOLEUM MANUFACTURING CO., LIMITED, 6, OLD BAILEY, LONDON, E.C.**



From the collections of Sydney Living Museums / Historic Houses Trust of NSW



**TRADE MARK.**

**No. 7051**

**STAINES CARPET INLAID LINOLEUM 8/4 WIDE**

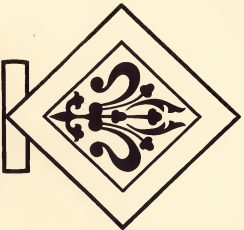
**(SECOND GAUGE.)**

**CODE WORD—"RALLY."**

**THE LINOLEUM MANUFACTURING CO., LIMITED, 6, OLD BAILEY, LONDON, E.C.**



From the collections of Sydney Living Museums / Historic Houses Trust of NSW



**TRADE MARK.**

**No. 7053**

**STAINES CARPET INLAID LINOLEUM 8/4 WIDE**

**(SECOND GAUGE.)**

**CODE WORD "RAMBLER."**

**THE LINOLEUM MANUFACTURING CO., LIMITED, 6, OLD BAILEY, LONDON, E.C.**





From the collections of Sydney Living Museums / Historic Houses Trust of NSW



TRADE MARK.

No. 7060

STAINES CARPET INLAID LINOLEUM  $\frac{3}{4}$  WIDE

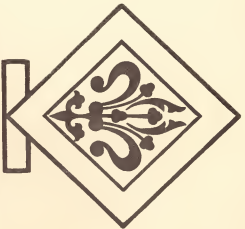
(SECOND GAUGE.)

CODE WORD—"RAMPANTLY."

THE LINOLEUM MANUFACTURING CO., LIMITED, 6, OLD BAILEY, LONDON, E.C.



From the collections of Sydney Living Museums / Historic Houses Trust of NSW



**TRADE MARK.**

**No. 7064**

**STAINES CARPET INLAID LINOLEUM 3/4 WIDE**

**(SECOND GAUGE.)**

**CODE WORD—"RANCID."**

**THE LINOLEUM MANUFACTURING CO., LIMITED, 6, OLD BAILEY, LONDON, E.C.**



From the collections of Sydney Living Museums / Historic Houses Trust of NSW



**TRADE MARK.**

**No. 7070**

**STAINES CARPET INLAID LINOLEUM 8/4 WIDE**

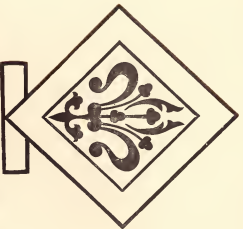
**(SECOND GAUGE.)**

**CODE WORD-"RANGERSHIP."**

**THE LINOLEUM MANUFACTURING CO., LIMITED, 6, OLD BAILEY, LONDON, E.C.**



From the collections of Sydney Living Museums / Historic Houses Trust of NSW



TRADE MARK.

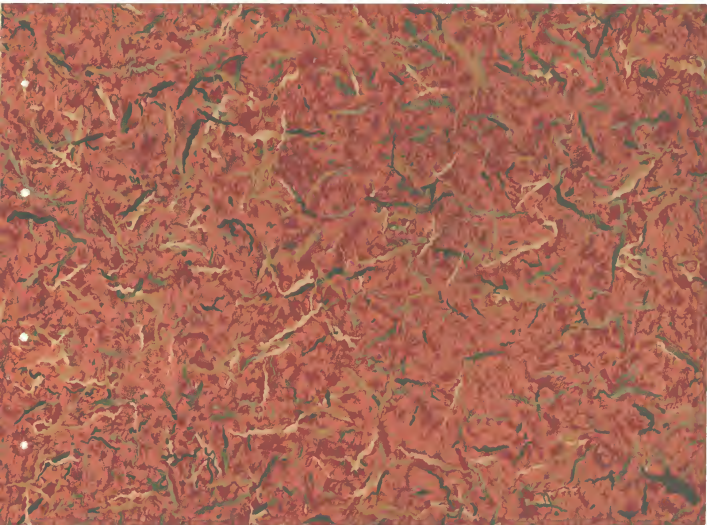
No. G15

STAINES GRANITE LINOLEUM  $\frac{3}{4}$  WIDE

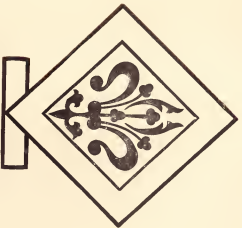
CODE WORD—"GREATLY."

THE LINOLEUM MANUFACTURING CO., LIMITED, 6, OLD BAILEY, LONDON, E.C.





From the collections of Sydney Living Museums / Historic Houses Trust of NSW



TRADE MARK.

No. G222

STAINES GRANITE LINOLEUM  $\frac{3}{4}$  WIDE

CODE WORD—"GAFFER."

THE LINOLEUM MANUFACTURING CO., LIMITED, 6, OLD BAILEY, LONDON, E.C.



From the collections of Sydney Living Museums / Historic Houses Trust of NSW



**TRADE MARK.**

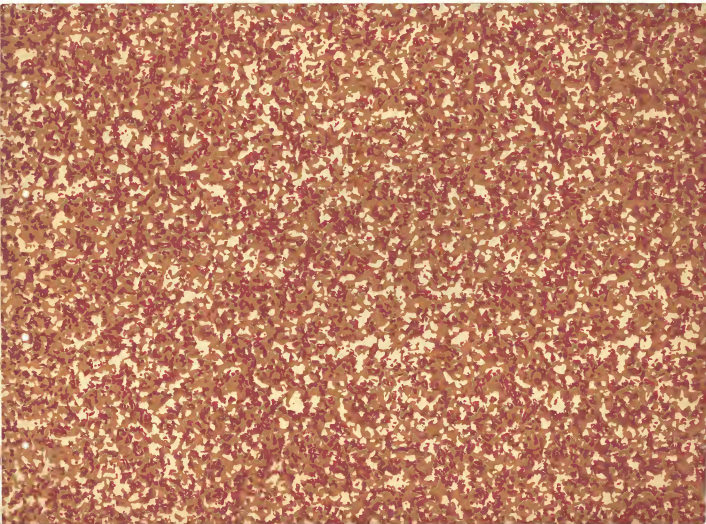
**No. G 206**

**STAINES GRANITE LINOLEUM  $\frac{3}{4}$  WIDE**

**(SECOND GAUGE.)**

**CODE WORD—"HAGGARD."**

**THE LINOLEUM MANUFACTURING CO., LIMITED, 6, OLD BAILEY, LONDON, E.C.**



From the collections of Sydney Living Museums / Historic Houses Trust of NSW



TRADE MARK,

No. G 208

STAINES GRANITE LINOLEUM  $\frac{3}{4}$  WIDE

(SECOND GAUGE.)

CODE WORD—"HAILSTONE."

THE LINOLEUM MANUFACTURING CO., LIMITED, 6, OLD BAILEY, LONDON, E.C.



From the collections of Sydney Living Museums / Historic Houses Trust of NSW

**STAINES GORK CARPET.**



**TRADE MARK.**

**PATTERN 4000, NUMBER**

Code Word, "CAMPAIGN."





From the collections of Sydney Living Museums / Historic Houses Trust of NSW

STAINES GORK CARPET.



TRADE MARK.

PATTERN 4005 NUMBER

Code Word, "CANAILLE"



From the collections of Sydney Living Museums / Historic Houses Trust of NSW

# STAINES GORK CARPET.



TRADE MARK.

PATTERN 4017 NUMBER

Co<sup>re</sup> Word, "CANDICANT".



From the collections of Sydney Living Museums / Historic Houses Trust of NSW

**STAINES CORK CARPET.**



**TRADE MARK.**

**PATTERN 4034 NUMBER**

Code Word, "CANNONADE."



From the collections of Sydney Living Museums / Historic Houses Trust of NSW

# STAINES CORK CARPET.



TRADE MARK.

PATTERN 4044 NUMBER

Code Word, "CANTATA."





From the collections of Sydney Living Museums / Historic Houses Trust of NSW

# STAINES GORK CARPET.



TRADE MARK.

<sup>THE</sup> PATTERN 4045 NUMBER

Code Word, "CANTATION."



From the collections of Sydney Living Museums / Historic Houses Trust of NSW

STAINES LINOLEUM.



TRADE MARK

PAT<sup>ENT</sup> PATTERN 3087 NUMBER

Wm. Ford F<sup>EDERATION</sup>



From the collections of Sydney Living Museums / Historic Houses Trust of NSW

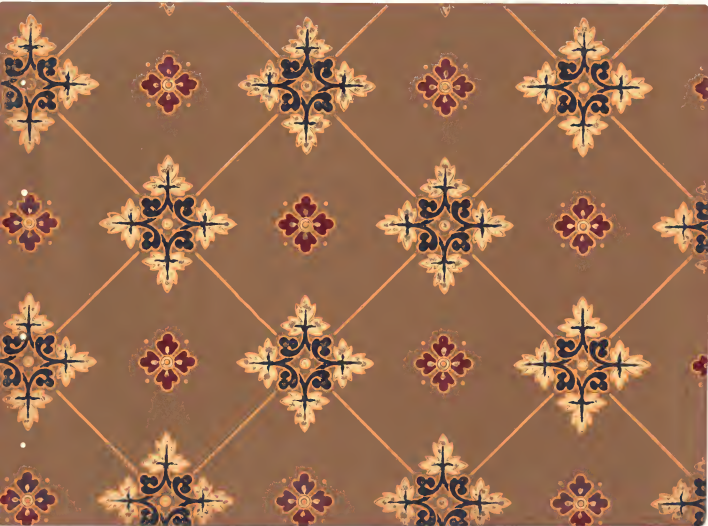
# STAINES LINOLEUM.



TRADE MARK.

PATTERN **3148** NUMBER.

Code Word. "FICHTIPIOUS."



From the collections of Sydney Living Museums / Historic Houses Trust of NSW

STAINES LINOLEUM.

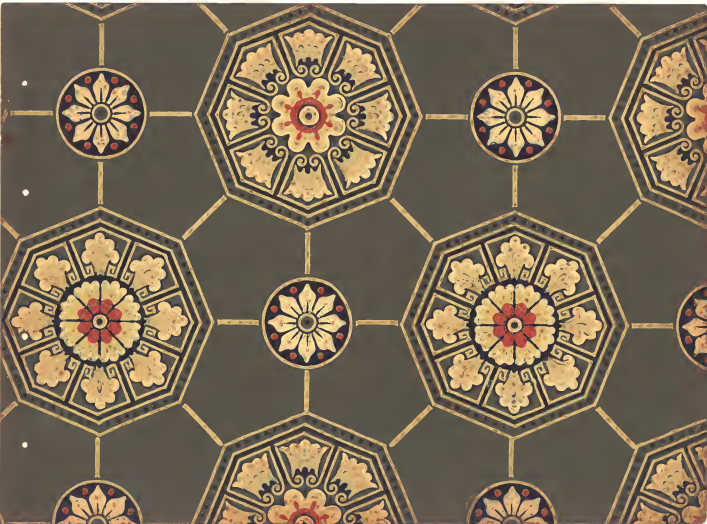


TRADE MARK.

PATTERN 3111 NUMBER

Code Word, "FEMORAL."





From the collections of Sydney Living Museums / Historic Houses Trust of NSW

STAINES LINOLEUM.

FACTORY 3115 WOODSIDE

SYDNEY N.S.W.

MADE IN AUSTRALIA



From the collections of Sydney Living Museums / Historic Houses Trust of NSW

STAINES LINOLEUM.



TRADE MARK

PATTERN 3119 NUMBER

Code Word "PERNOWL."



From the collections of Sydney Living Museums / Historic Houses Trust of NSW

**STAINES LINOLEUM.**



**TRADE MARK.**

**PATTERN 3065 NUMBER**

Code Word, "PAULITLESS."



From the collections of Sydney Living Museums / Historic Houses Trust of NSW

STAMMES MUSEUM.

1875  
1876  
1877  
1878  
1879  
1880  
1881  
1882  
1883  
1884  
1885  
1886  
1887  
1888  
1889  
1890  
1891  
1892  
1893  
1894  
1895  
1896  
1897  
1898  
1899  
1900

SPRUE 15711

AVTREN 3145 RUTWEEK

1875 1876 1877 1878 1879 1880 1881 1882 1883 1884 1885 1886 1887 1888 1889 1890 1891 1892 1893 1894 1895 1896 1897 1898 1899 1900

From the collections of Sydney Living Museums / Historic Houses Trust of NSW





From the collections of Sydney Living Museums / Historic Houses Trust of NSW

STAINLESS LINOLEUM

1912

PATENT MARK

PATENT NUMBER 8120

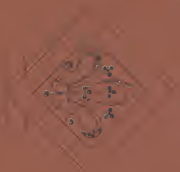
TRADE MARK - SEE "STAINLESS"

From the collections of Sydney Living Museums / Historic Houses Trust of NSW



From the collections of Sydney Living Museums / Historic Houses Trust of NSW

STAINES LINOLEUM.



TRADE MARK.

PATTERN 3165 NUMBER

Code Word "FILBERT"



From the collections of Sydney Living Museums / Historic Houses Trust of NSW

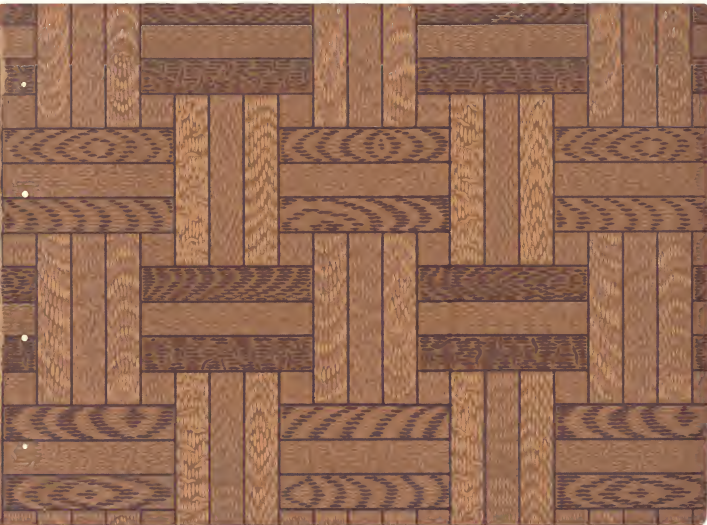
STAINES LINOLEUM.



TRADE MARK.

PATTERN 3012 NUMBER

Code Word 'MACULITY'



From the collections of Sydney Living Museums / Historic Houses Trust of NSW

STAINES LINOLEUM.



TRADE MARK.

PATTERN 3041 NUMBER

Code Word. "FANDANGO"



# Price list

## First Range

1<sup>st</sup> grade

9<sup>th</sup> Jan 19 in No 16 1500

Compt. below

per stone 8 57 90 9

Some extra in

with Section of 13<sup>th</sup> grade

2<sup>nd</sup> grade

1<sup>st</sup> grade

per 20 v.

July 18 200 6 90 9

Compt. below Jan 6 1000

2<sup>nd</sup> grade for

Compt. - 4<sup>th</sup> grade

3<sup>rd</sup> 50<sup>th</sup> No 6 1000 6 1000

1<sup>st</sup> grade Compt. below

1<sup>st</sup> grade

1<sup>st</sup> 2

5 1 5

7 1 10

9 2 7

Range 2<sup>nd</sup> 18

1<sup>st</sup> grade

1<sup>st</sup> grade 3/6

2<sup>nd</sup> 3/6

3<sup>rd</sup> 3/6

4<sup>th</sup> 3/6

5<sup>th</sup> 3/6

6<sup>th</sup> 3/6

7<sup>th</sup> 3/6

8<sup>th</sup> 3/6

9<sup>th</sup> 3/6

10<sup>th</sup> 3/6

11<sup>th</sup> 3/6

12<sup>th</sup> 3/6

13<sup>th</sup> 3/6

1<sup>st</sup> grade

1<sup>st</sup> grade

1<sup>st</sup> grade

2<sup>nd</sup> grade

1<sup>st</sup> grade 1<sup>st</sup> 1000 1000

2<sup>nd</sup> 1000 1000

3<sup>rd</sup> 1000 1000

4<sup>th</sup> 1000 1000

5<sup>th</sup> 1000 1000

6<sup>th</sup> 1000 1000

7<sup>th</sup> 1000 1000

8<sup>th</sup> 1000 1000

9<sup>th</sup> 1000 1000

10<sup>th</sup> 1000 1000

11<sup>th</sup> 1000 1000

12<sup>th</sup> 1000 1000

13<sup>th</sup> 1000 1000

14<sup>th</sup> 1000 1000

15<sup>th</sup> 1000 1000

16<sup>th</sup> 1000 1000

17<sup>th</sup> 1000 1000

18<sup>th</sup> 1000 1000

19<sup>th</sup> 1000 1000

20<sup>th</sup> 1000 1000

21<sup>st</sup> 1000 1000

22<sup>nd</sup> 1000 1000

23<sup>rd</sup> 1000 1000

24<sup>th</sup> 1000 1000

25<sup>th</sup> 1000 1000

26<sup>th</sup> 1000 1000

27<sup>th</sup> 1000 1000

28<sup>th</sup> 1000 1000

29<sup>th</sup> 1000 1000

30<sup>th</sup> 1000 1000

31<sup>st</sup> 1000 1000

32<sup>nd</sup> 1000 1000

33<sup>rd</sup> 1000 1000

34<sup>th</sup> 1000 1000

35<sup>th</sup> 1000 1000



From the collections of Sydney Living Museums / Historic Houses Trust of NSW