

HUDSON'S

*"Ready Cut"*

HOMES



*Some Designs  
of*

**HUDSON'S**

*"Ready-Cut"*

**HOMES**



**GEORGE HUDSON Pty. Limited**  
*Timber Merchants*

Head Office and Works:  
**1 BRIDGE ROAD, GLEBE, SYDNEY**

City Office and Showrooms:  
**219 ELIZABETH STREET, SYDNEY**  
(Between Park and Bathurst Streets)  
Telephone MA 6776 (5 Lines)

# HUDSON'S *"Ready-Cut"* HOMES

## GEORGE HUDSON Pty. Limited:—

Have been in business as Importers, Wholesale and Retail Timber Merchants and suppliers of General Building materials for nearly 100 years, and are the largest Timber organisation in the Commonwealth.

Have their own forests and some of the largest Sawmills in the State, which produce some of the finest timber logged in N.S.W., such as Tallowood, Blackbutt, Brush Box, Mahogany, etc.

Are direct Importers of Oregon, Baltic, Cedar, Paraná Pine, Maple and all softwoods from various parts of the world.

Carry at all times extensive stocks to ensure air-seasoned or kiln-dried supplies to be always available.

Are very large manufacturers of all types of Doors, Sashes, Mouldings and Joinery of all descriptions.

Are specialists in all Floorings.

Are renowned for their Parquet Floors, which are supplied fixed and polished complete in all species of timber.

Stock all lines of Plywoods and Veneers.

Are distributors of all types of Hardboards, Cane-ite, Gyprock, Timbrock, Asbestos Cement sheets, Fibrous Plaster Board and other lining materials.

Are suppliers of Paints and General Builders' Hardware.

Supply and fix C.S.R. Asphalt Tiles in a variety of patterns and colours, also Acoustic Tiles and Insulation Board.

## GEORGE HUDSON Pty. Limited

City Office & Showrooms: 219 ELIZABETH STREET, SYDNEY

# HUDSON'S *"Ready-Cut"* HOMES

## SOME FACTS about Hudson's "READY-CUT" Homes

The words "READY-CUT" were brought into use by George Hudson Pty. Limited to designate the cutting and machining of the materials in a timber-framed home prepared by them.

The system adopted by this Company is the only one preparing the materials to the extent justifying the use of the words "READY-CUT."

The "READY-CUT" system was pioneered in Australia by George Hudson Pty. Limited almost 100 years ago, and the words "HUDSON'S 'READY-CUT' HOMES" are symbolical of the best, both with regard to quality of materials and excellence of construction.

They are prepared in exactly the same manner as that adopted by an architect or first-class builder.

All materials used are of the highest standard and the cutting and preparation are carried out by machines specially designed for the purpose.

Hudson's "READY-CUT" System can be applied to your own or any design, and quotations will be gladly given if a rough sketch or plan is submitted.

Hudson's "READY-CUT" Homes are prepared only at the one address, viz., 1 Bridge Road, Glebe, and all business is conducted at that address or at 219 Elizabeth Street, Sydney.

Any of the Designs shown can be supplied to the reverse plan.

---

### Some of the SERVICES rendered in connection with the supply of Hudson's "READY-CUT" Homes

A complete set of plans and specifications is provided with each order, and detail plans comprising foundation plan, floor joist plan, ceiling plan, wall sheeting plan, roof plan and all construction details are supplied.

Hudson's "READY-CUT" Homes plans and specifications comply with all Local Government requirements and are in accordance with the standard of all financing institutions.

The services of a qualified inspector are available during the whole of the erection period without any additional charge to the client. He will supervise the erection from start to finish, and his advice is always available to purchasers of Hudson's "READY-CUT" Homes.

## GEORGE HUDSON Pty. Limited

City Office & Showrooms: 219 ELIZABETH STREET, SYDNEY

# HUDSON'S "Ready-Cut" HOMES

## Some of the ADVANTAGES of Hudson's "READY-CUT" Homes

All sleeper plates are cut to exact lengths and halved at intersections.

All floor joists are cut to correct lengths.

All studs, rafters, etc., and plates are gauged to uniform size.

All studs are housed into top and bottom plates, all trimmers are housed into studs.

All rafters are cut to exact shape, bird's-mouthed over top plate.

All ridges, hips and valleys are cut ready to fix.

All barge boards, etc., are cut for fixing.

All doors are hung into frames, with butt hinges and fitted complete with locks, ready for placing into prepared openings.

All window sashes are fitted and hung into frames ready for fixing.

All verandah posts, plates, etc., are cut ready for fixing.

Alternative linings to walls and ceilings internally, such as hardboard, cane-ite, or gyprock, can be supplied if desired.

Roof coverings other than terra cotta tiles, viz., cement tiles, corrugated asbestos cement, stamped metal tiles or corrugated galvanised iron, are optional.

All verandah flooring is cut to exact length.

## GEORGE HUDSON Pty. Limited

City Office & Showrooms: 219 ELIZABETH STREET, SYDNEY

# HUDSON'S *"Ready-Cut"* HOMES

## STANDARD SPECIFICATION.

Sleeper plates—4 x 3 northern hardwood.

Floor joists—4 x 2 northern hardwood.

Stud framing—4 x 2 oregon.

Ceiling joists—4 x 2 oregon.

Rafters—4 x 2 oregon.

External wall sheeting—4 in. rusticated weatherboards or asbestos cement.

Internal lining—Fibrous plaster throughout, excepting laundry, bathroom and kitchen; bathroom—tile pattern sheeting to dado, plaster above; kitchen—asbestos cement dado and plaster above; laundry—asbestos cement.

Ceilings—all internal, excepting laundry, art fibrous plaster and cornices; laundry—asbestos cement; verandah (where shown)—asbestos cement.

All fibrous plaster walls and ceilings are supplied and fixed complete.

Doors and windows as shown are fitted complete with locks, fasteners, hinges, etc.

Flooring—internal (excepting to laundry and bathroom) 1 in. T. & G. Baltic or hardwood. Verandah—hardwood.

Roof—terra cotta tiles, with ridging to match—supplied and fixed complete.

Mouldings—skirting 4 in.  
architraves 3 in.  
picture rail 2 in.  
internal angle moulds 1 in.

All gutters, downpipes, etc., solder, nails, pier caps and dampcourse, window and door flashing, and valley iron are included.

Paint materials included.

All doors and windows externally are painted one coat before delivery.

Linen-press and wardrobes, where shown, are included.

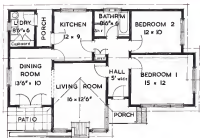
## GEORGE HUDSON Pty. Limited

City Office & Showrooms: 219 ELIZABETH STREET, SYDNEY

HUDSON'S "Ready-Cut" HOMES



"VAUCLUSE"



GEORGE HUDSON Pty. Limited

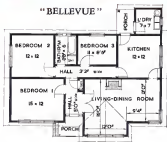
City Office & Showrooms: 219 ELIZABETH STREET, SYDNEY



HUDSON'S *Ready-Cut* HOMES



"BELLEVUE"



**GEORGE HUDSON Pty. Limited**

City Office & Showrooms: 219 ELIZABETH STREET, SYDNEY

HUDSON'S *"Ready-Cut"* HOMES

"ROSEVILLE"

2 Bedroom



GEORGE HUDSON

*Timber*

City Office &

219 ELIZABETH

(Between Park & ...)

Telephone: MA

HUDSON'S *"Ready-Cut"*

HUDSON'S

*Ready-Cut*

HOMES



“ROSEVILLE”

3 Bedroom

SON Pty. Limited

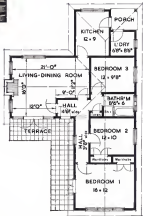
Merchants

Showrooms :

STREET, SYDNEY

(Bathurst Streets).

6776 (5 lines).



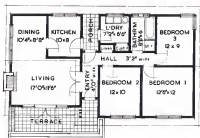
*Ready-Cut*

HOMES

HUDSON'S *"Ready-Cut"* HOMES



"GRAFTON"



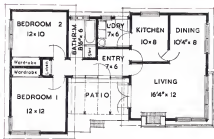
GEORGE HUDSON Pty. Limited

City Office & Showrooms: 219 ELIZABETH STREET, SYDNEY

HUDSON'S *Ready-Cut* HOMES



"PITTWATER"



**GEORGE HUDSON Pty. Limited**

City Office & Showrooms: 219 ELIZABETH STREET, SYDNEY

HUDSON'S *Ready-Cut* HOMES



"MACQUARIE"

**GEORGE HUDSON Pty. Limited**

City Office & Showrooms: 219 ELIZABETH STREET, SYDNEY

HUDSON'S *"Ready-Cut"* HOMES



"WAVERLEY"



**GEORGE HUDSON Pty. Limited**

City Office & Showrooms: 219 ELIZABETH STREET, SYDNEY

HUDSON'S *"Ready-Cut"* HOMES



"AVALON"



**GEORGE HUDSON Pty. Limited**

City Office & Showrooms: 219 ELIZABETH STREET, SYDNEY



HUDSON'S *"Ready-Cut"* HOMES



"WINDSOR"



**GEORGE HUDSON Pty. Limited**

City Office & Showrooms: 219 ELIZABETH STREET, SYDNEY

HUDSON'S *"Ready-Cut"* HOMES



"CARLTON"



**GEORGE HUDSON Pty. Limited**

City Office & Showrooms: 219 ELIZABETH STREET, SYDNEY





*Wholly set up and printed  
in Australia by  
John Sands Pty. Ltd., Sydney*