

Home Units

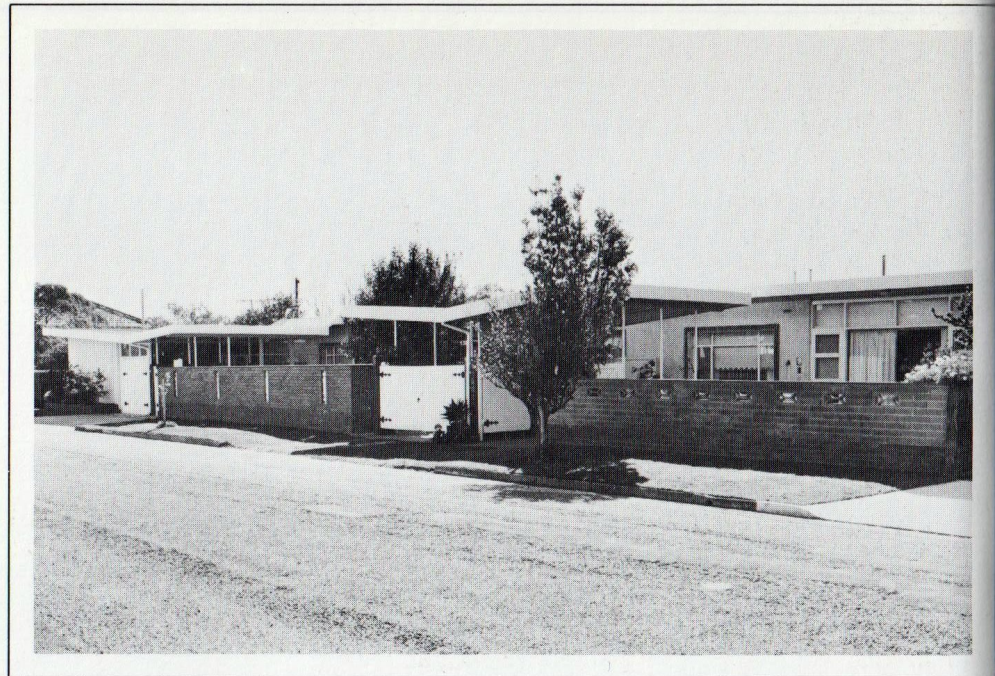
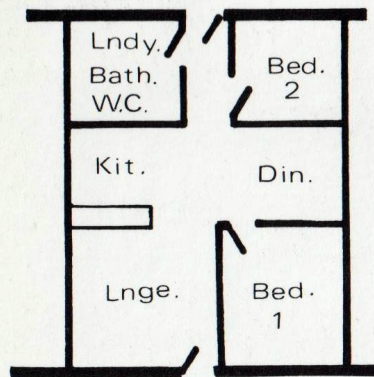
DEVELOPMENT FROM
1958 to 1980

Home Units

1958 TO CURRENT TIMES

Adelaide's first home unit development was built in 1958. Pictured is that development. Titles to these units were in the form of company issued shares with cross leases, giving rights of occupancy for 99 to 999 years. The leases were registered on the Certificate of Title which was held in the company's name.

Strata Titles were introduced in December 1967 with the first Strata Title being issued on 21st May, 1968. Illustrated on P 127 is that development. Many of the original units were built down the allotments and provided very limited private backyard space with car ports often located at the rear of the site. The Colonial style units were built in large numbers in the eastern suburbs and seaside areas of Glenelg and Brighton. These units, until the late 1960's early 1970's, were occupied primarily by older retired people.





Home Units

PHOTO CURRENTS

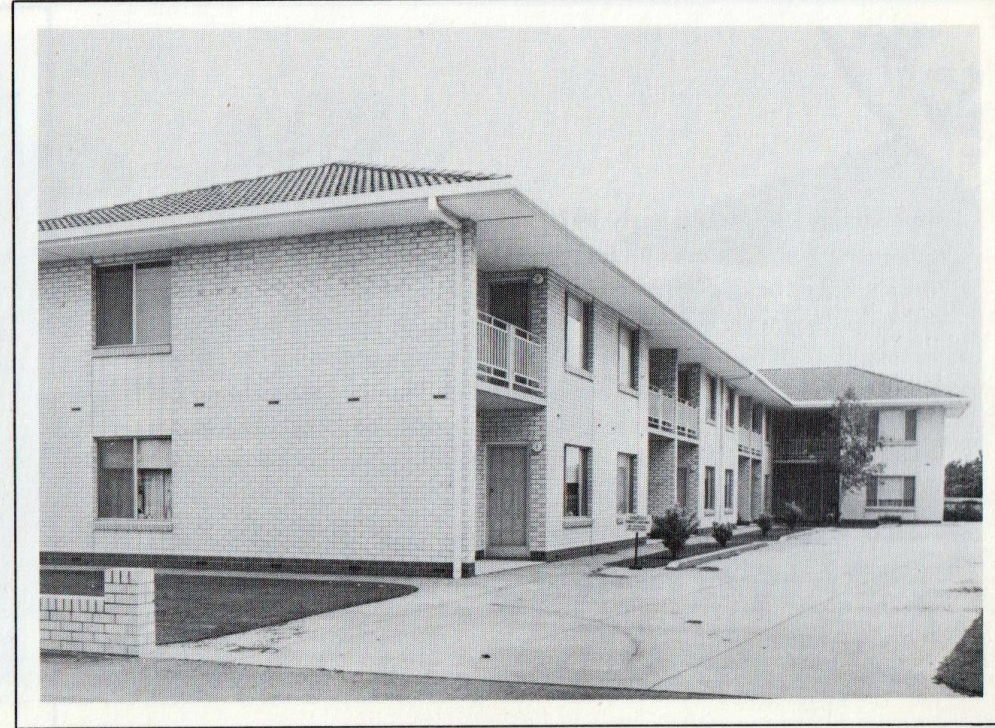
Built in 1964 these units were on company titles and were small attached two bedroom single storey units with backyards. Others were two-storey developments of two bedrooms with each unit being on the one level. Many similar groups to these have converted their company title ownership to strata titles. This has made them more popular as finance is readily available from long term lending institutions.



Built in 1964 these are Colonial style units originally on company titles. There are a mixture of single and two storey units. This group was a forerunner for many similar types of developments which extended well into the seventies.



Built in the 1960's, these low market units resembled single or two storey flats, but often had rear yards and a group of free standing garports at the rear of the development, with the open space as illustrated being a common area.



Built in 1974 as flats this group was strata titled and subsequently sold individually in 1980. They comprised both one and two bedrooms with a reasonably spacious lounge, dining/kitchen area. Each had its own carport together with additional off-street parking and the grounds were extensively landscaped with other amenities comprising lawned areas with several barbecues for the use of occupants.



Built in the 1960's and early 1970's many groups of flats were constructed and let as such for a number of years. Today many of these have been converted to strata titles and sold to individual owners. Generally at the time of sale the common areas were upgraded to provide more of a home unit environment. Often added amenities such as barbecue areas and landscaping would be included. Generally, there was no courtyard space available in such developments and all of the open space with the exception of open carpark areas was common to all.



