

Accommodating cars

Haberfield garden suburb was designed before motor cars became popular, and few of the house designs allowed space for garaging residents' vehicles on their own land. Today, some difficulties arise in accommodating garages and carports so as not to detract from the style of the Federation house in its garden setting.

Garages and carports can be appropriately designed to relate to the house by matching the materials and design. One of the most satisfactory and simple approaches is to repeat the triangular gable feature of the house in the roof design of the garage or carport.

Landscaping

Garden paths, fences and walls are important elements which enhance the general appearance of Haberfield streets and the character of its individual houses.

Original fences should be repaired and retained or reinstated where necessary. Many examples of original fences still exist in the area. Iron or wood picket fences are appropriate. Fences of other styles and periods (e.g. Victorian ironlace and modern styles) are not appropriate.

Haberfield was designed as a garden suburb and great emphasis was placed on both public and private gardens. Particular tree and bush species were favoured and a list of those especially associated with the period is included in the conservation control code to assist in appropriate replanting. Tree planting in nature strips maintains the garden suburb character.

Shopping Centre

The existing character of the Ramsay and Dalhousie Streets shopping centre is one of two storey, mostly Federation-style buildings. Many of the shop fronts have been changed over the years, but above the awning level, distinctive elements of Federation architecture remain – painted woodwork, dark bricks, balconies. The shops are all built to the footpath alignment, and present a unified facade which should not be interrupted.

Where parking areas are required, they should be accommodated at the rear of existing buildings with access from side streets or rear lanes, not by driveways across the footpath.

The future of Haberfield

Haberfield's importance as part of our heritage will continue to increase with time if its distinctive qualities are maintained and conserved.

The guidelines proposed by the Heritage Council for the Haberfield Conservation Area are necessary to help both Ashfield Council and owners to maintain and protect the heritage of Federation architecture and planning which is Haberfield.

Your comments on the guidelines will be valuable in assessing public reaction to the proposal.

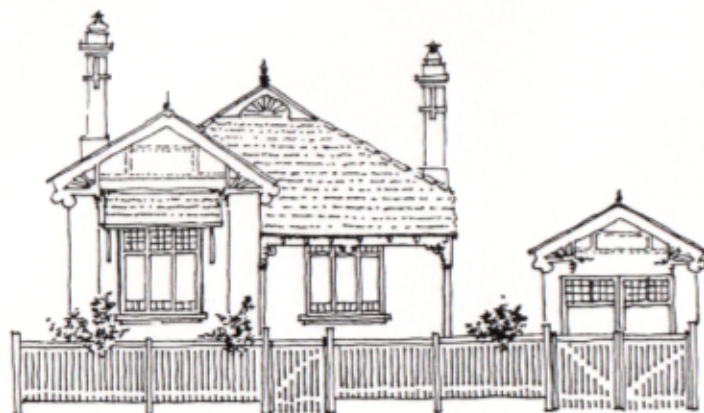
Please take this opportunity to comment on these proposals to:

The Heritage Council of N.S.W.
Box A284 Sydney South 2000

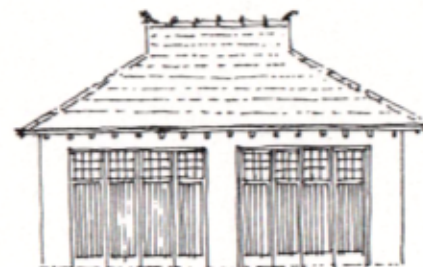
or post in the boxes provided at the exhibition.



A SIMPLE CAR-PORT OF TIMBER
CONSTRUCTION BLENDED WITH
A FRONT PICKET FENCE



A GARAGE WITH GABLE TRIM
MATCHING THE GABLE OF THE HOUSE



A TWO-CAR GARAGE