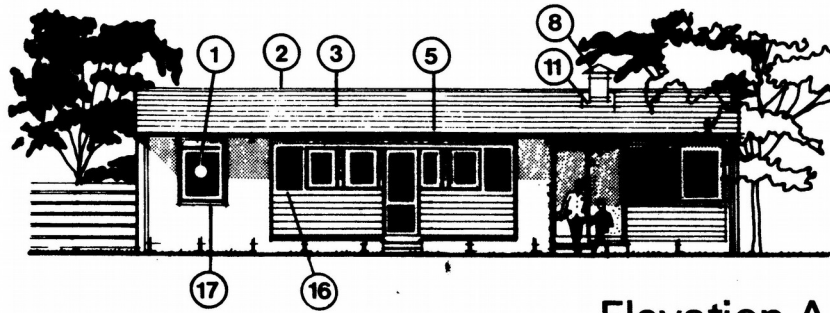
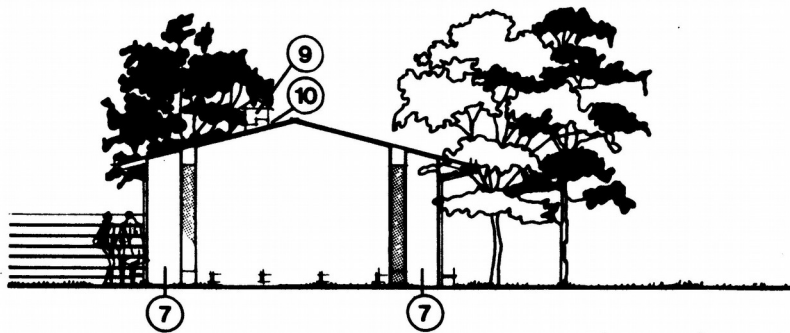


## BUILDING GENERAL TERMS



Elevation A



Elevation B

- |                                     |                                     |
|-------------------------------------|-------------------------------------|
| <b>1</b> Awning sash                | <b>13</b> Transom                   |
| <b>2</b> Ridging                    | <b>14</b> Architrave or cover mould |
| <b>3</b> Roofing material           | <b>15</b> Downpipe                  |
| <b>4</b> Ceiling line               | <b>16</b> Sill (timber or metal)    |
| <b>5</b> Eaves gutter (spouting)    | <b>17</b> Sill (brick)              |
| <b>6</b> Exposed rafters or trusses | <b>18</b> Floor line                |
| <b>7</b> Porch screen               | <b>19</b> Ground level              |
| <b>8</b> Cowl (flue)                | <b>20</b> Brickwork                 |
| <b>9</b> Chimney                    | <b>21</b> Poch slab                 |
| <b>10</b> Chimney gutter            | <b>22</b> Porch steps               |
| <b>11</b> Flashing                  | <b>23</b> Weatherboard              |
| <b>12</b> Mullion                   | <b>24</b> Glass                     |
|                                     | <b>25</b> Ceiling height            |